



ARGENT MB1 **RGB** Mouse Bungee User Guide



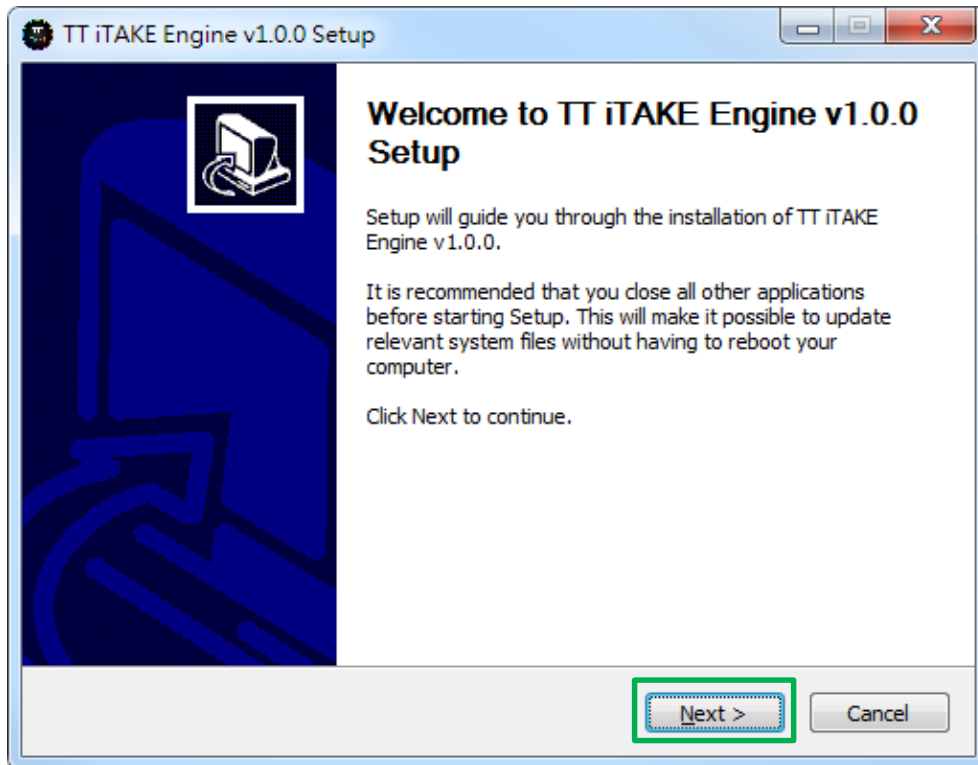
PAGE 03	TT iTAKE Installation	
PAGE 06	Functions Available on the Home Page	
PAGE 08	Functions Available on the Lighting Effects Page	
PAGE 10	Lighting Effects Overview	
	• Static	----- 11
	• Pulse	----- 15
	• Blink	----- 19
	• Spiral Rainbow	----- 23
	• RGB Spectrum	----- 27
	• Raindrops	----- 28
	• Snake	----- 30
	• Music Mode	----- 32
	• Temp.	----- 34
PAGE 35	Functions Available on the Settings Page	



| Chapter 1: TT iTAKE Installation

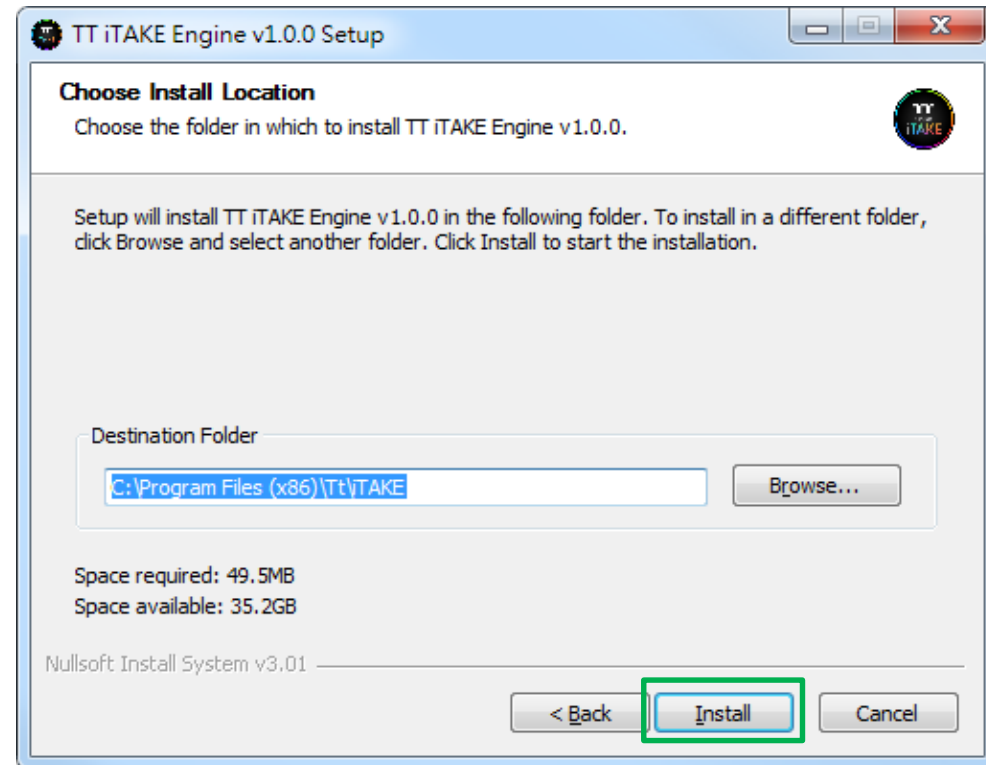
Step 1:

Launch the setup executable file (.EXE) file and click Next.



Step 2:

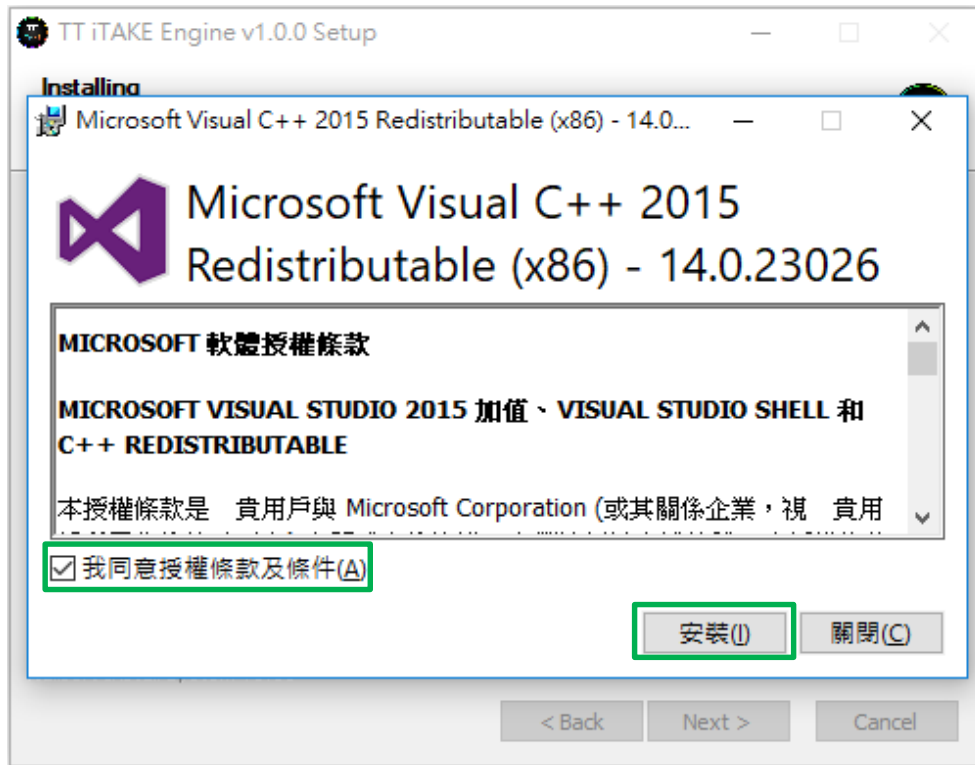
Click Install to begin the setup process.



Step 3:

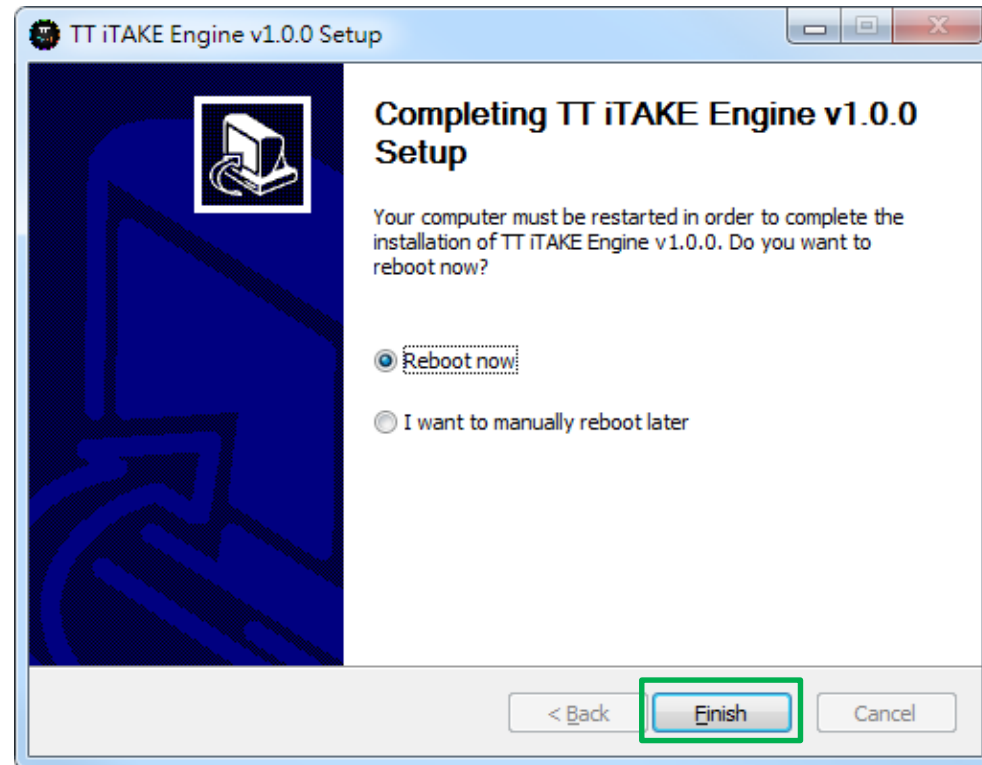
Once setup is complete, you will also need to install the Microsoft Visual C++ 2015 Redistributable Package.

✗ Without installing the Redistributable Package, the software will fail to launch.



Step 4:

Click Finish to complete the installation.



| Chapter 2: Functions Available on the Home Page

Switching the Home Page

You can switch the configurations between different Thermaltake products

Switching Profiles

The ARGENT MB1 RGB mouse bungee can support up to 6 profiles, which can be switched as required.

Lighting Configuration

Lighting effects.

Functions for Managing Profiles

Up to 15 profiles can be added for use. The functions of each button from left to right are:

Add: Create a new profile.

Delete: Delete an existing profile.

Copy: Copy a profile.

Import: Import a profile.

Export: Export a profile.

Correcting the Name of a Profile

The name of a new profile can be modified directly.

PC IP Address

Use the TT iTAKE APP to enter the IP for control.

Other Settings / Shrink Window / Close Window

Other Settings: Software version, firmware version, Amazon Alexa setting and switching the language used for the user interface.

Shrink Window: Close the display and minimize the program to the taskbar.

Close Window: Close the display and minimize the program to the lower right corner.



Lighting Effect Configuration Menu

Setup lighting effects.

| Chapter 3: Functions Available on the Lighting Effects Page

Switching Lighting Effects

9 lighting effects are supported: Static, Pulse, Blink, Spiral Rainbow, RGB Spectrum, Raindrops, Snake, Music Mode, and Temp.

Lighting Effects Configurations

Can be used to adjust the color, direction, speed, and brightness level of the lighting effect within an area; can also be used to switch to random colors.

Apply / Restore Lighting Effect Settings

Apply: Apply the new lighting effect settings.

Restore Lighting Effect Settings: All lighting effect settings saved under the current profile will be restored to factory default values.

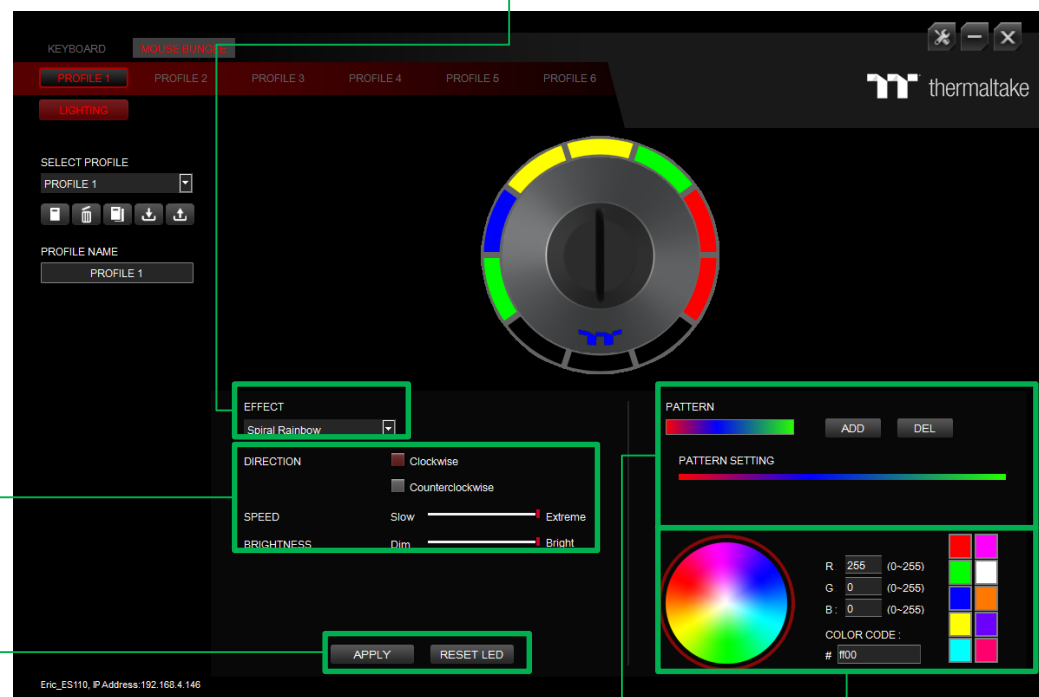
Color Pattern Settings

Add Pattern: Add a new pattern with red to black gradient.

Delete Pattern: Delete the currently selected color pattern.

Insert Color Point: Add a red color point to the color pattern.

Delete Color Point: Delete the selected color point from the color pattern.



Color Wheel Settings

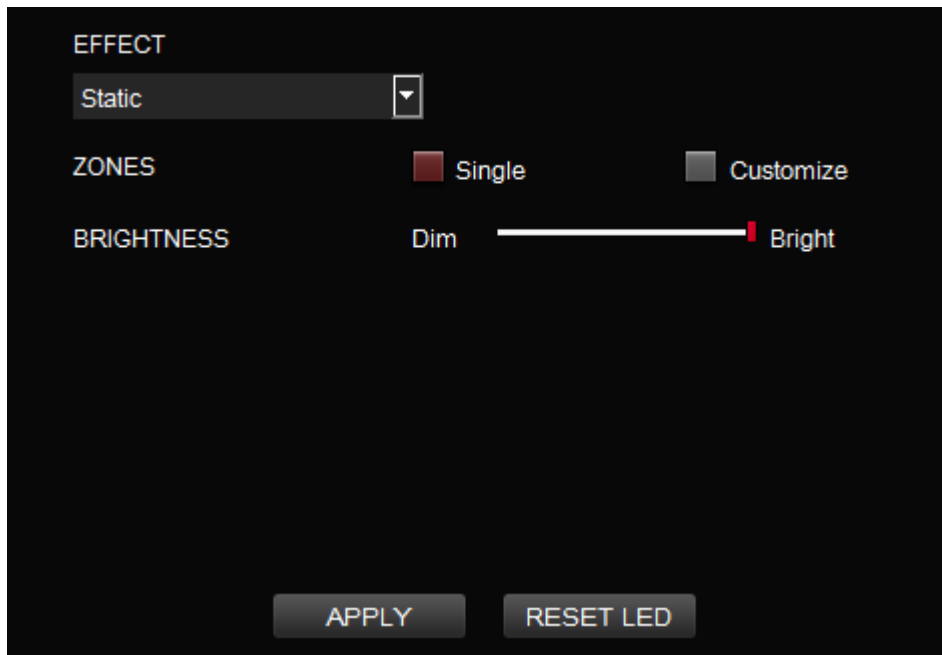
You can select a color from the color wheel directly or enter RGB color values to adjust the color of the lighting effect.

| Chapter 4: Lighting Effects Overview



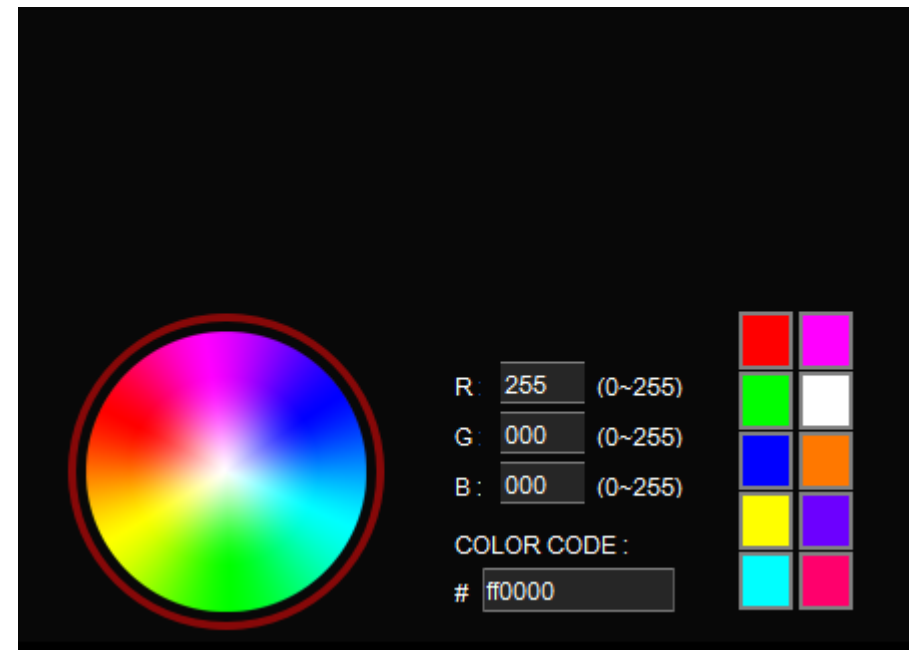
Step 1:

Select "Static Area" in the Lighting Effect drop-down list.



Step 2:

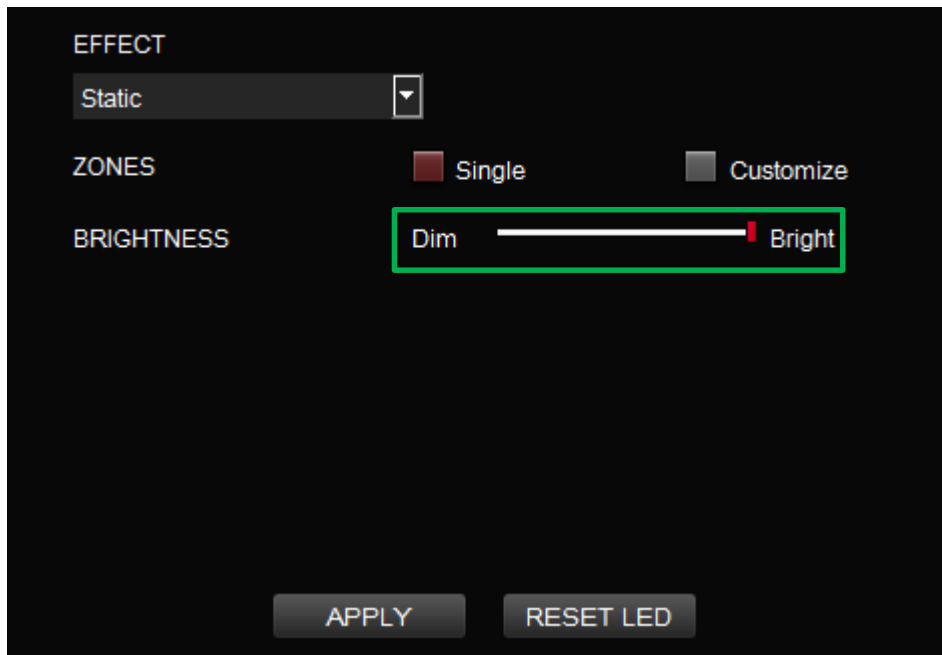
Click on a color inside the color wheel or enter the RGB color values to change the color.





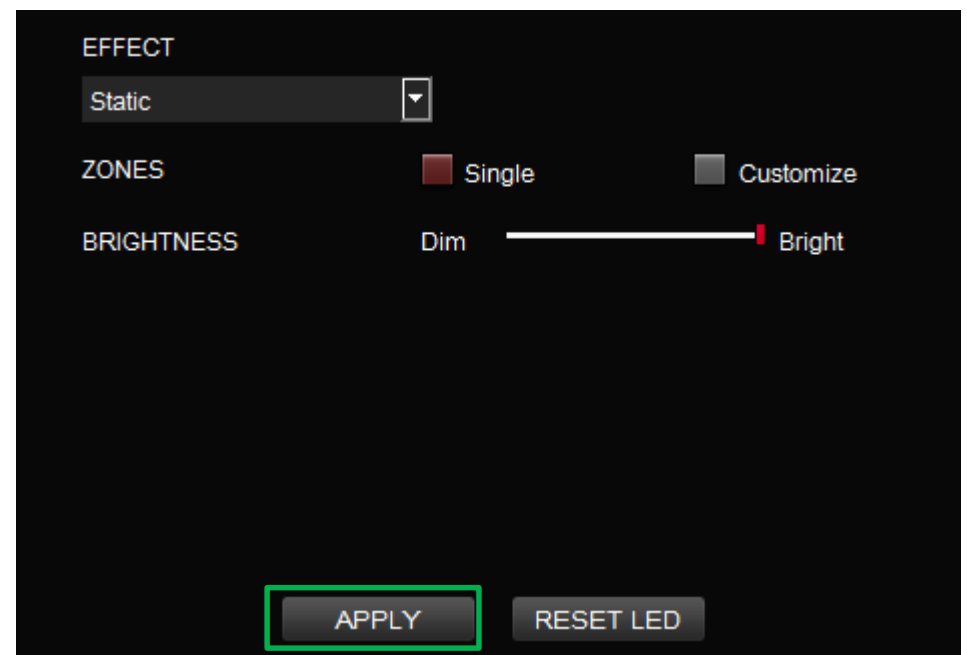
Step 3:

Adjust the brightness level of the backlight.



Step 4:

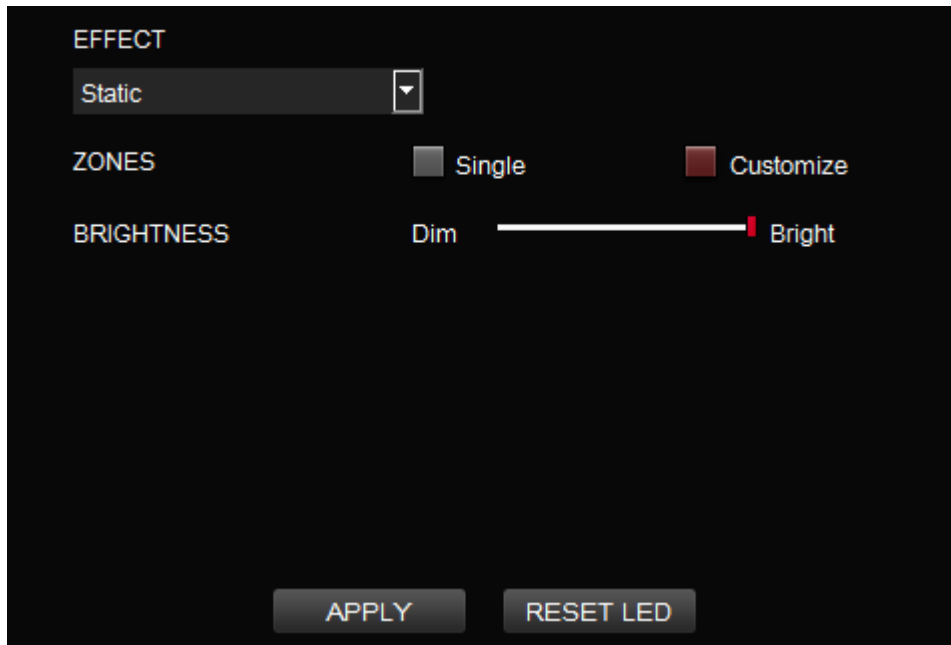
Click Apply to save the new settings.





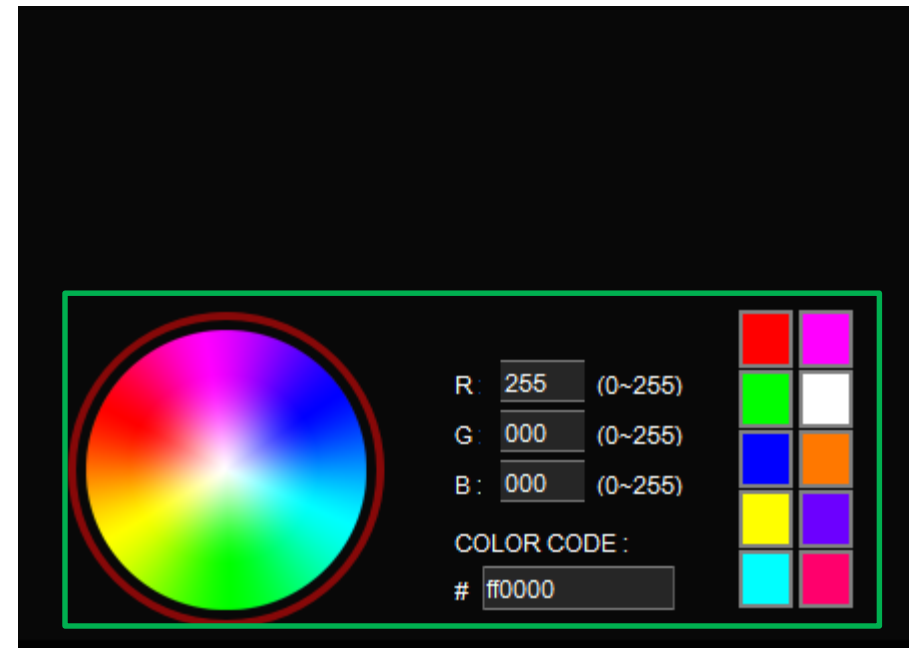
Step 1:

Switch the zones to "Customized."



Step 2:

Click on a color inside the color wheel or enter the RGB color values to set the color.





Step 3:

Click on the mouse bungee image directly with the left mouse button to change the color.

✘ Right click to cancel the color.

Step 4:

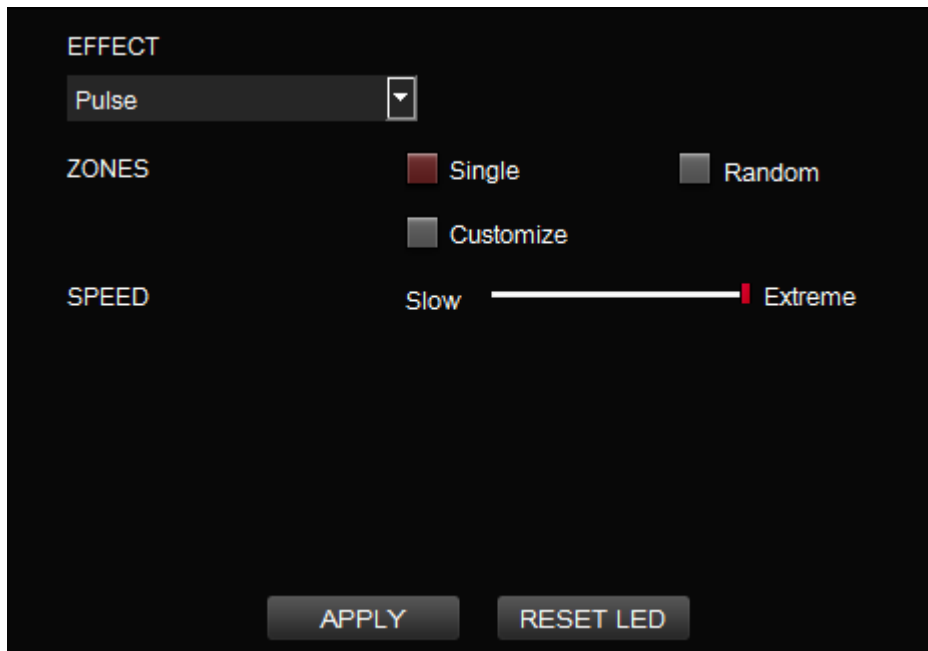
Click Apply to save the new settings.





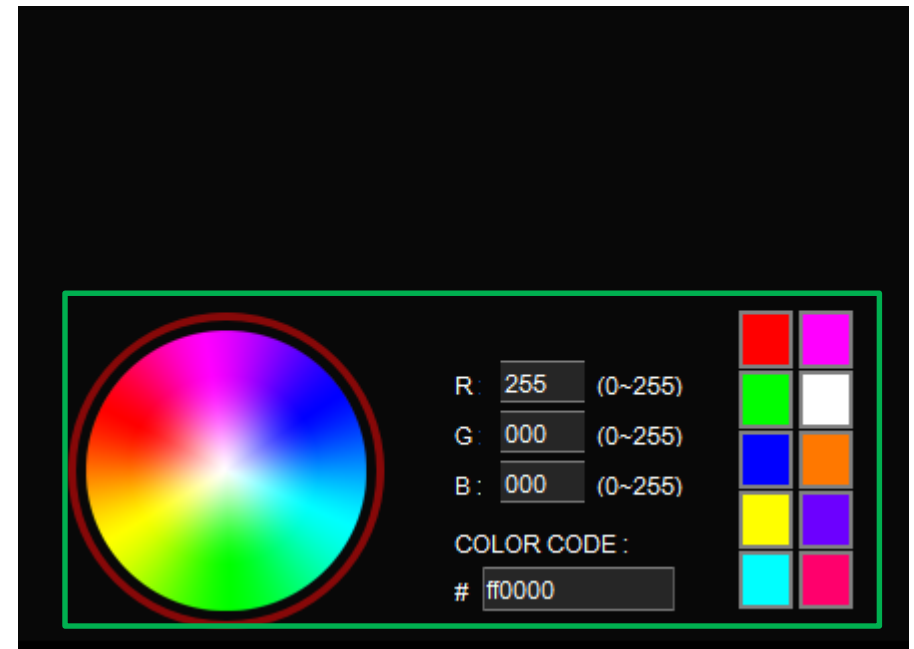
Step 1:

Select "Pulse Area" in the Lighting Effect drop-down list.



Step 2:

Click on a color inside the color wheel or enter the RGB color values to change the color.



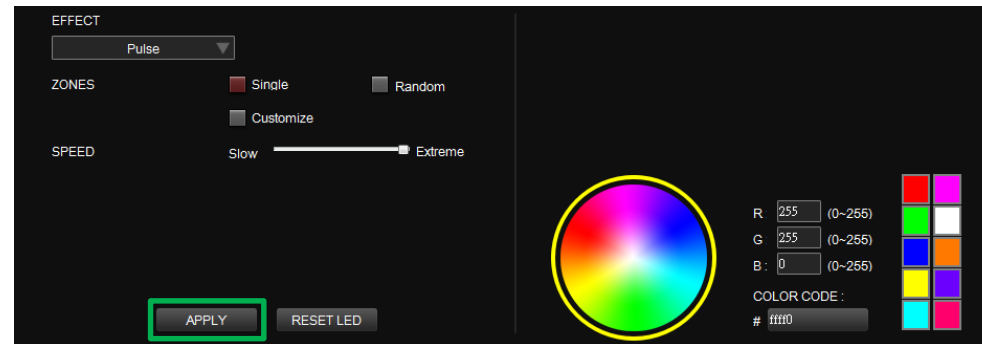
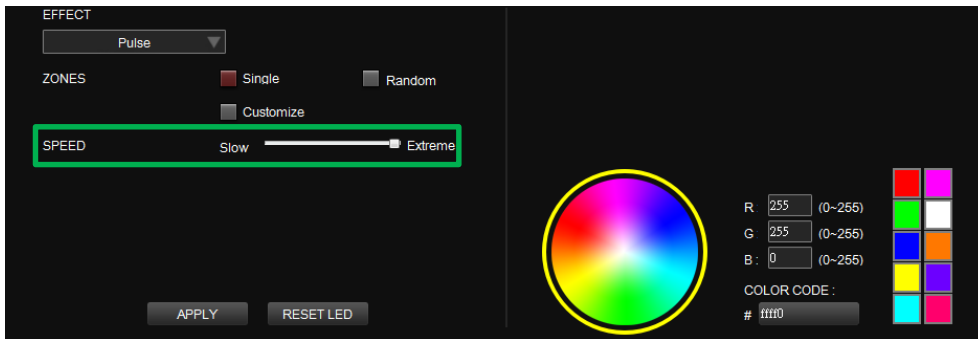


Step 3:

Adjust the backlight speed.

Step 4:

Click Apply to save the new settings.

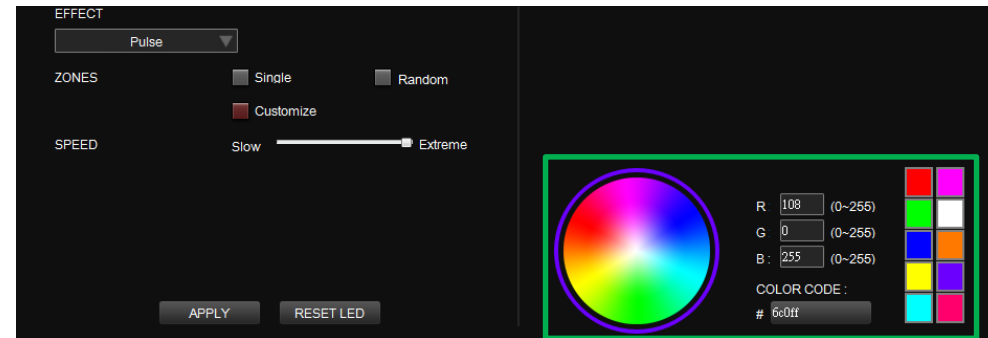
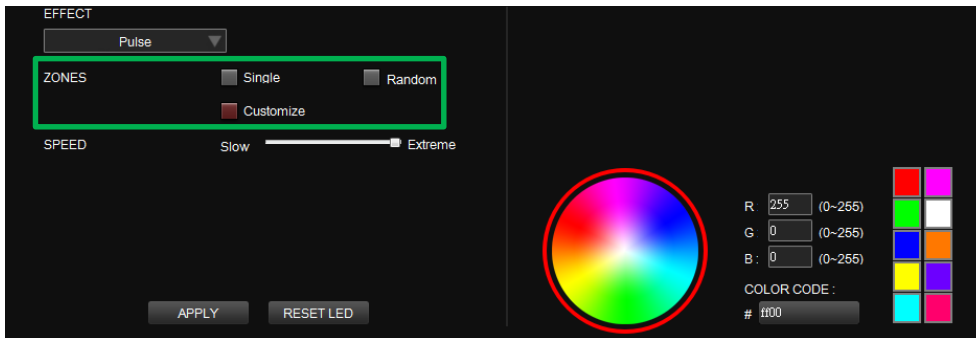


Step 1:

Switch the zones to "Customized."

Step 2:

Click on a color inside the color wheel or enter the RGB color values to set the color.





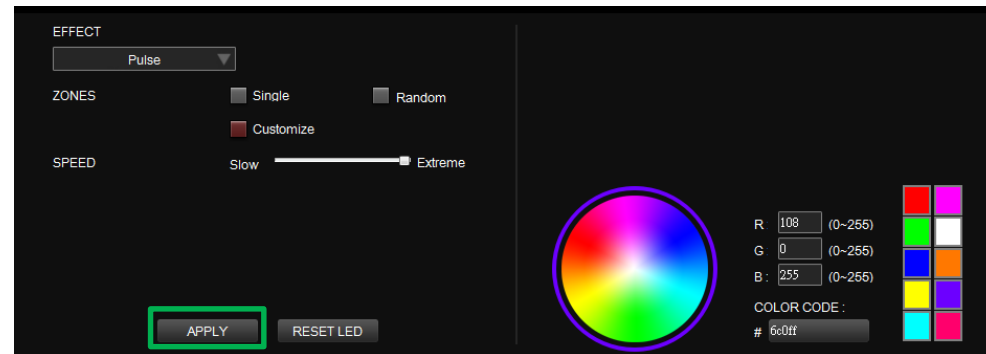
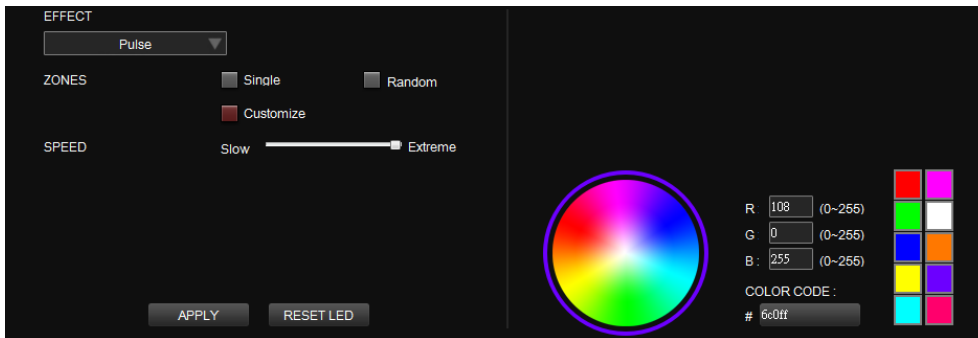
Step 3:

Click on the mouse bungee image directly with the left mouse button to change the color.

✘ Right click to cancel the color.

Step 4:

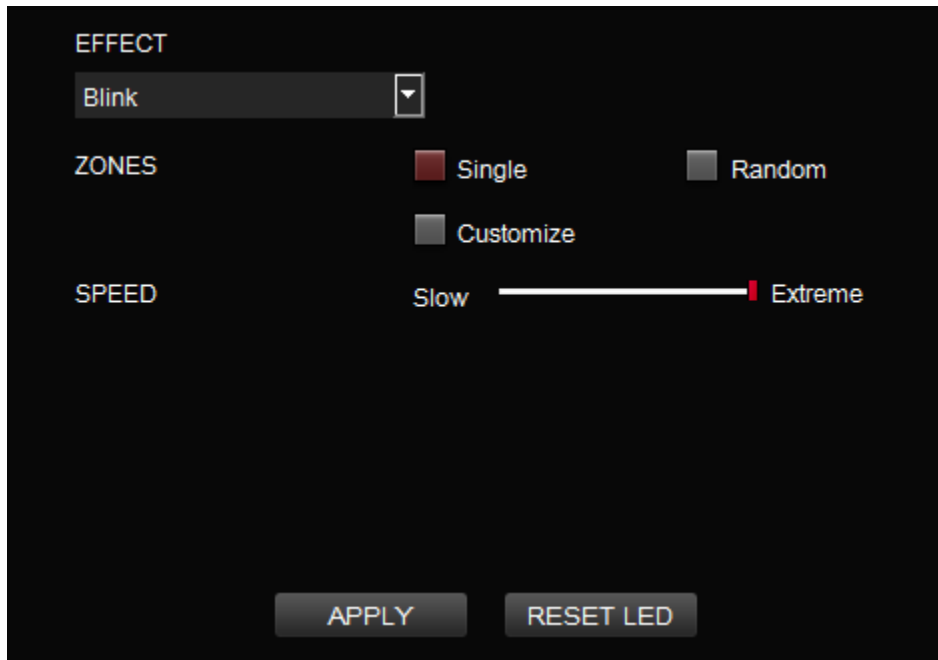
Click Apply to save the new settings.





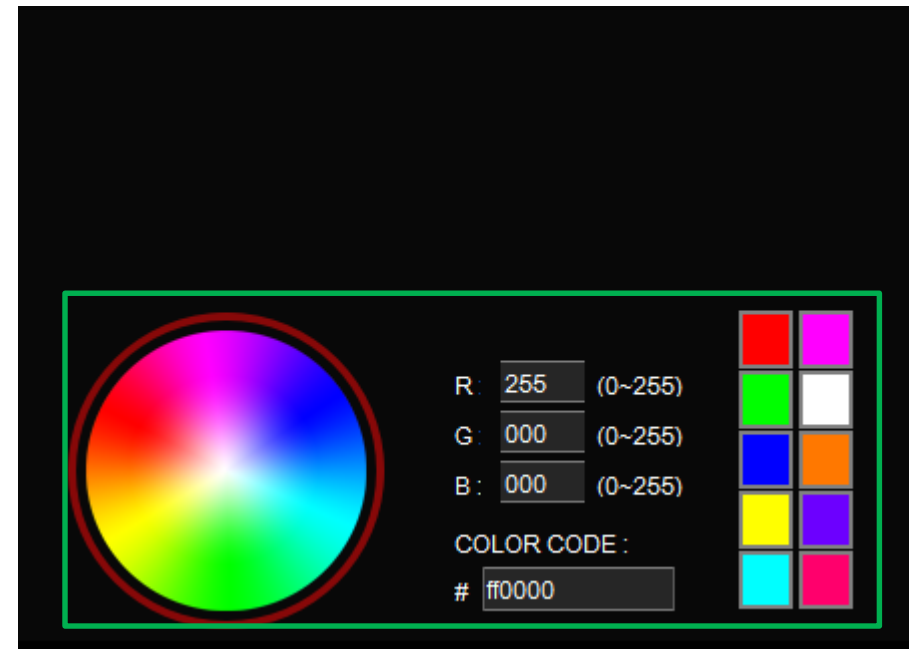
Step 1:

Select "Blink Area" in the Lighting Effect drop-down list.



Step 2:

Click on a color inside the color wheel or enter the RGB color values to change the color.

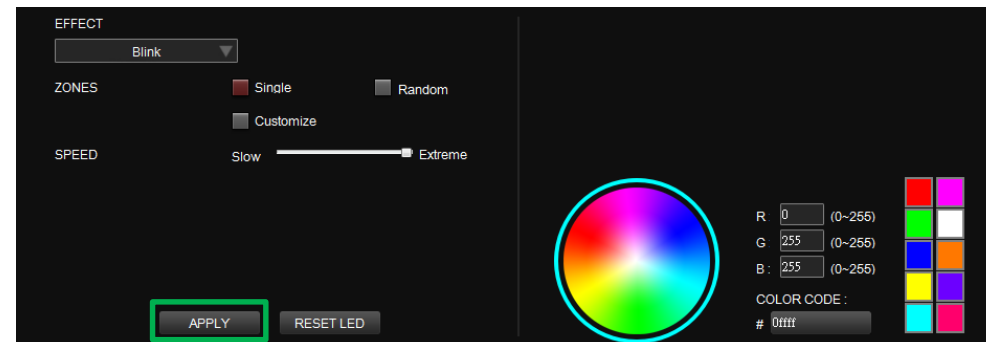
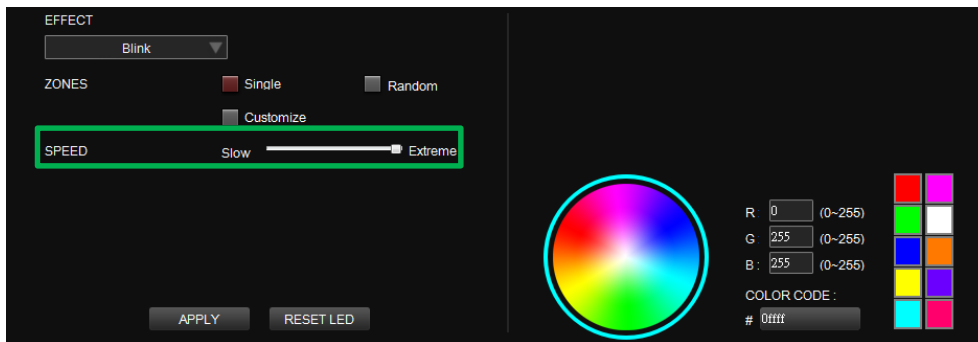


Step 3:

Adjust the backlight speed.

Step 4:

Click Apply to save the new settings.



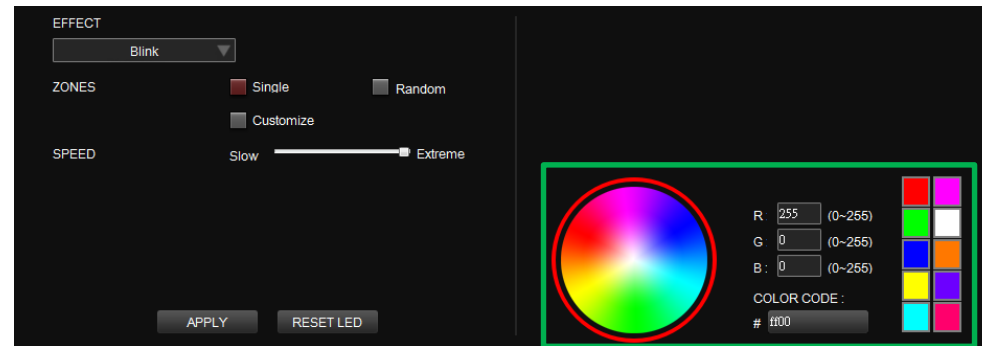
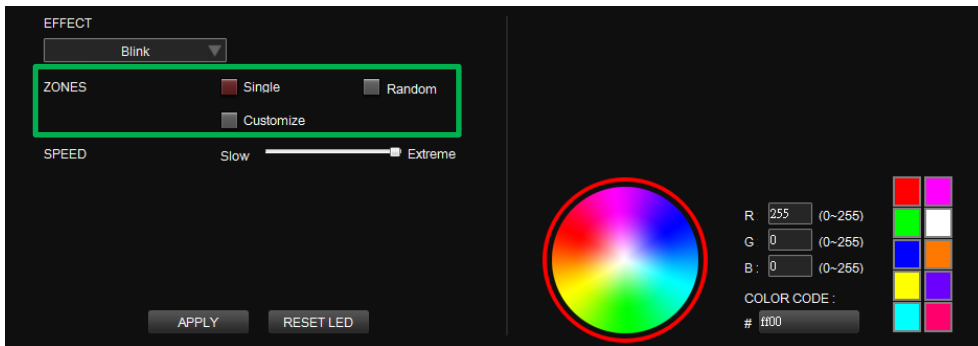


Step 1:

Switch the zones to "Customized."

Step 2:

Click on a color inside the color wheel or enter the RGB color values to set the color.





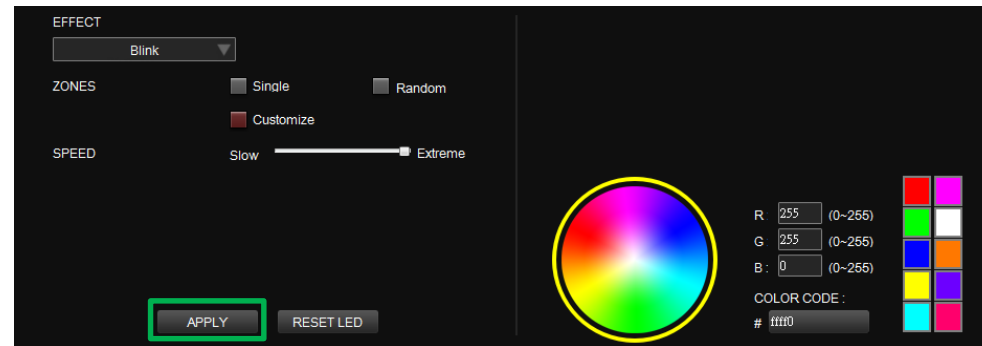
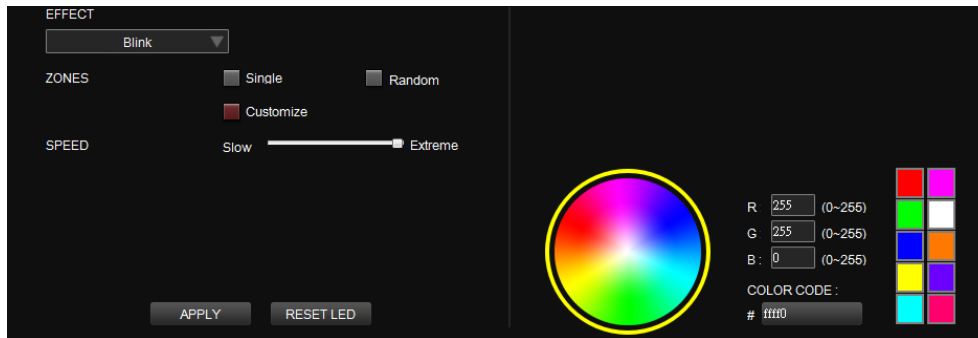
Step 3:

Click on the mouse bungee image directly with the left mouse button to change the color.

✘ Right click to cancel the color.

Step 4:

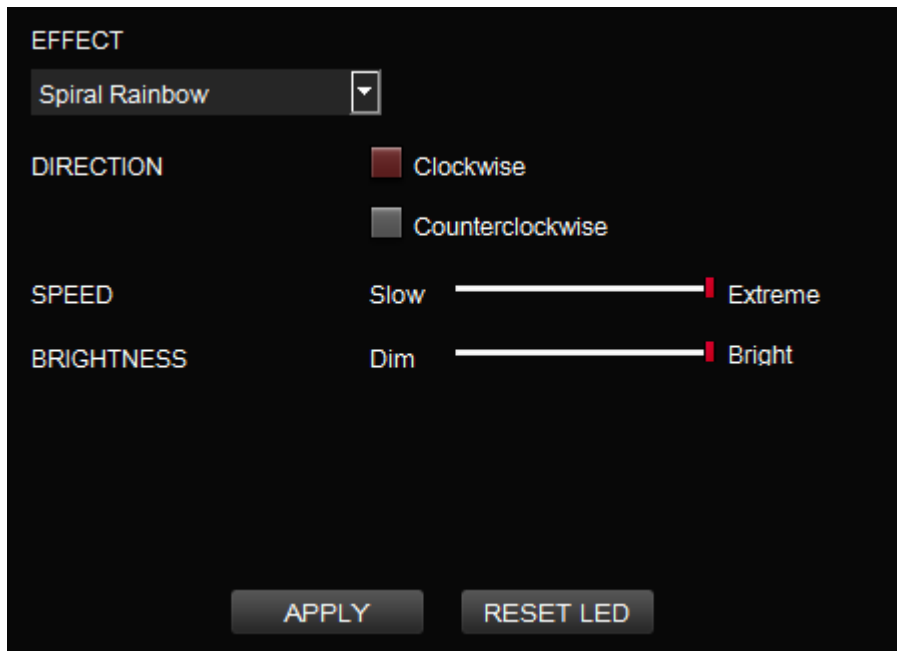
Click Apply to save the new settings.





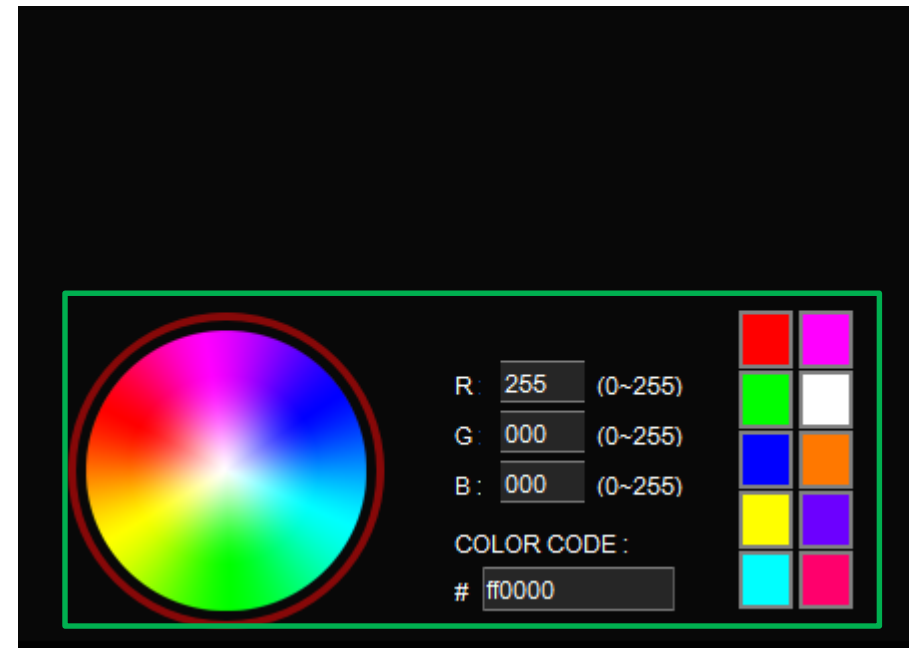
Step 1:

Select "Spiral Rainbow Area" in the Lighting Effect drop-down list.



Step 2:

Select a set of color patterns on the upper-right.



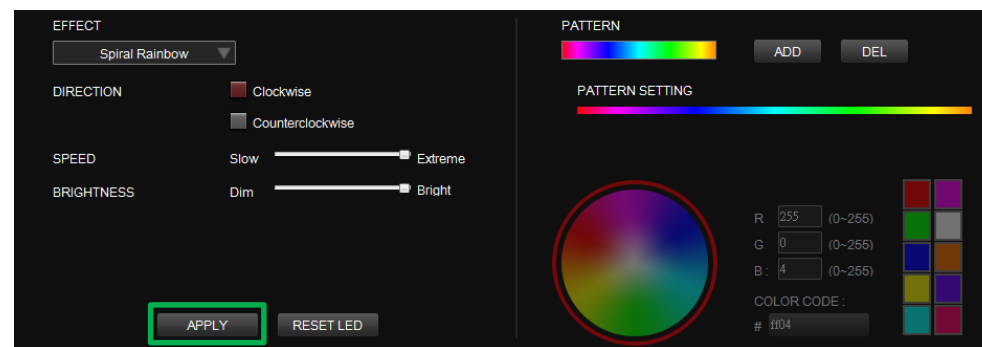
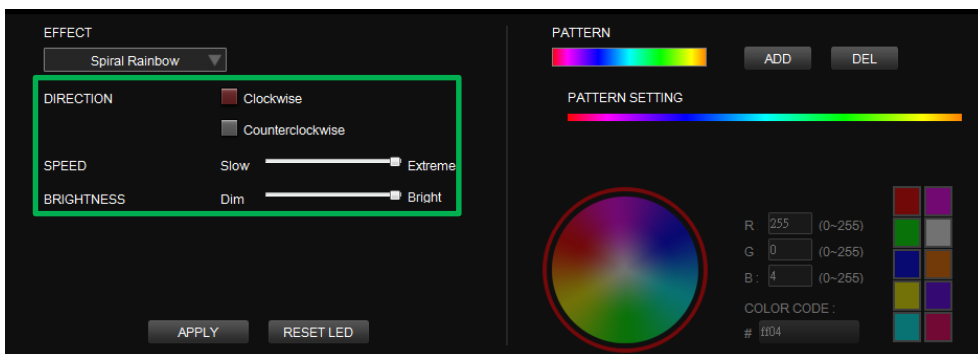


Step 3:

Set the direction, speed, and brightness level of the lighting effect.

Step 4:

Click Apply to save the new settings.



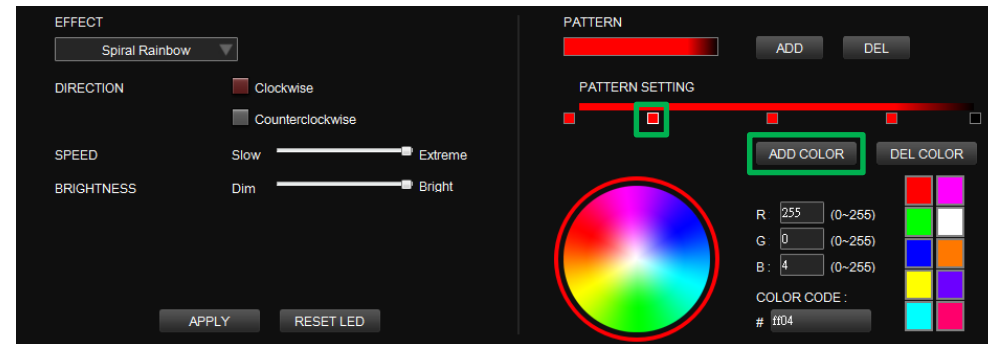
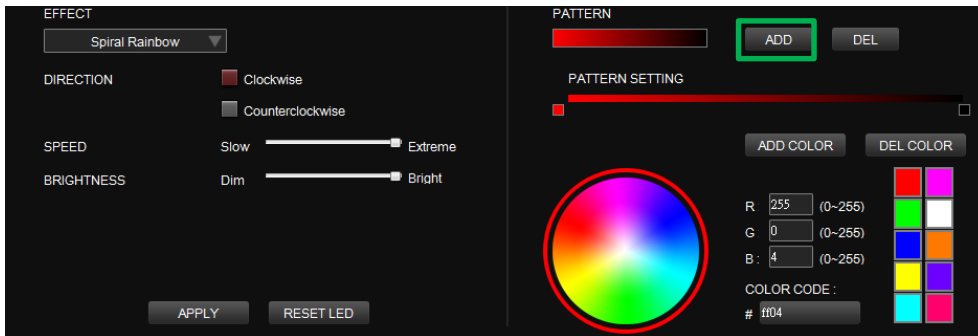


Step 1:

Add a new set of color patterns.

Step 2:

Add a new color-insertion point and drag it to the desired position.



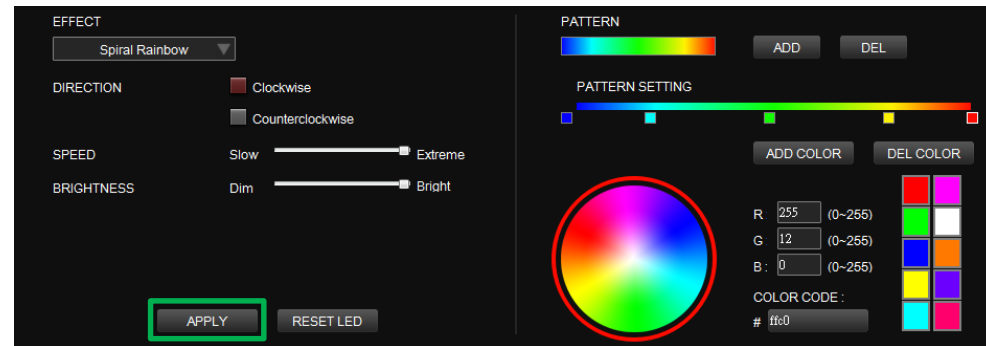
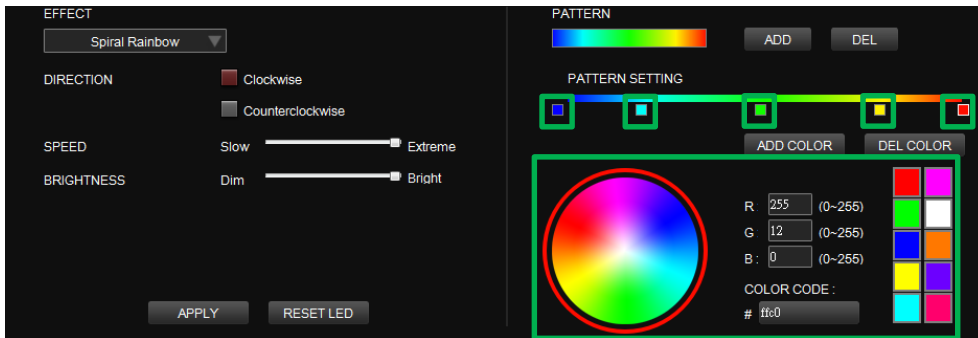


Step 3:

Click on each color-insertion point to modify its color.

Step 4:

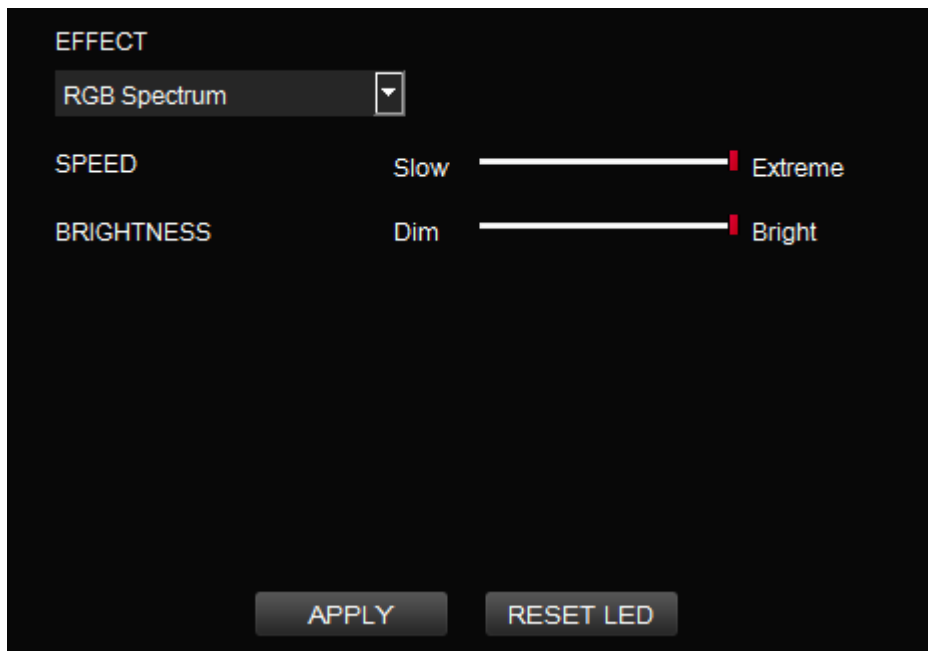
Click Apply to save the new settings.





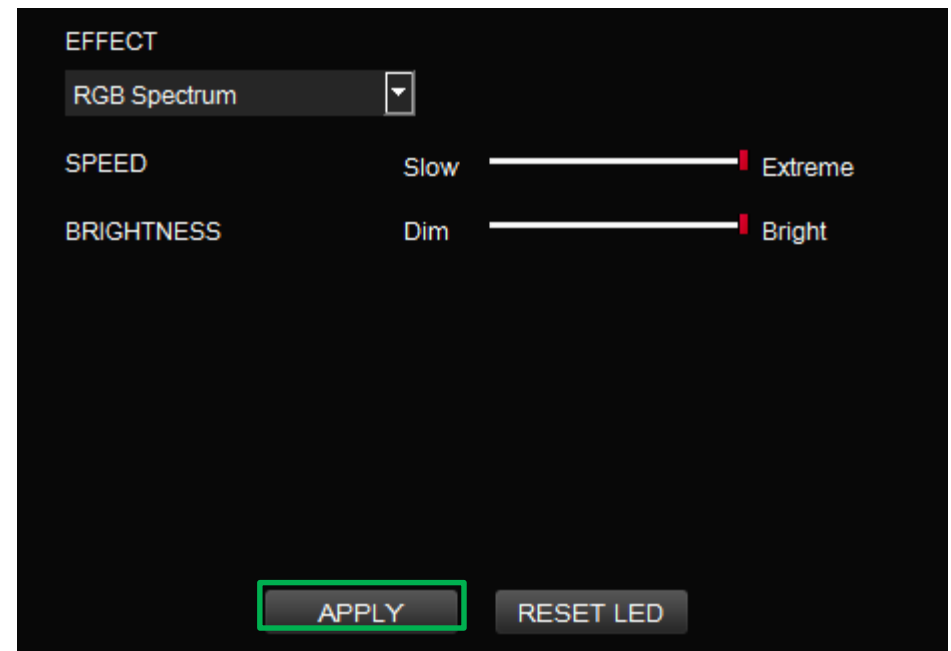
Step 1:

Select "Spectrum Cycling Area" in the Lighting Effect drop-down list.



Step 2:

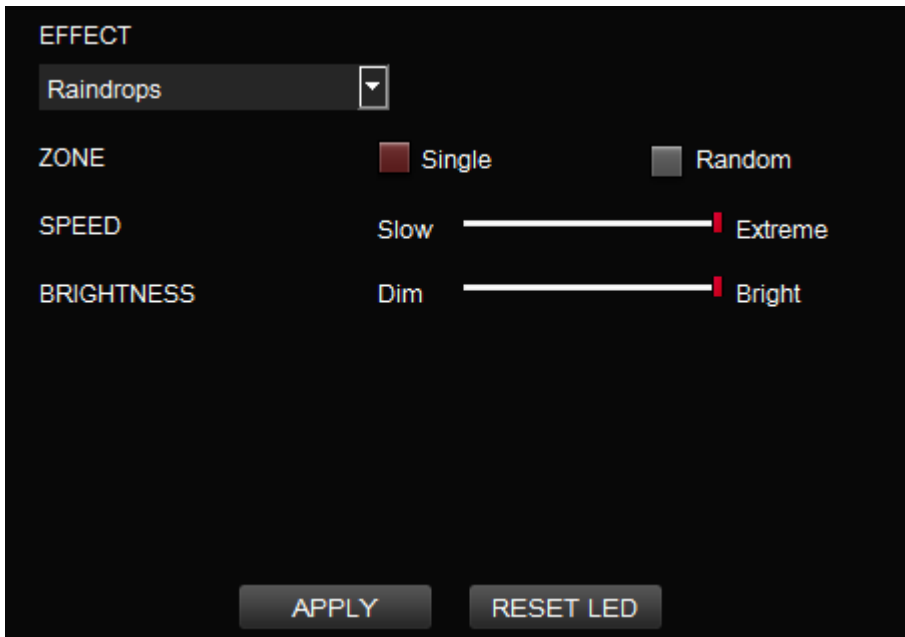
Set the speed and brightness level of the backlight and click on Apply to save the new settings.





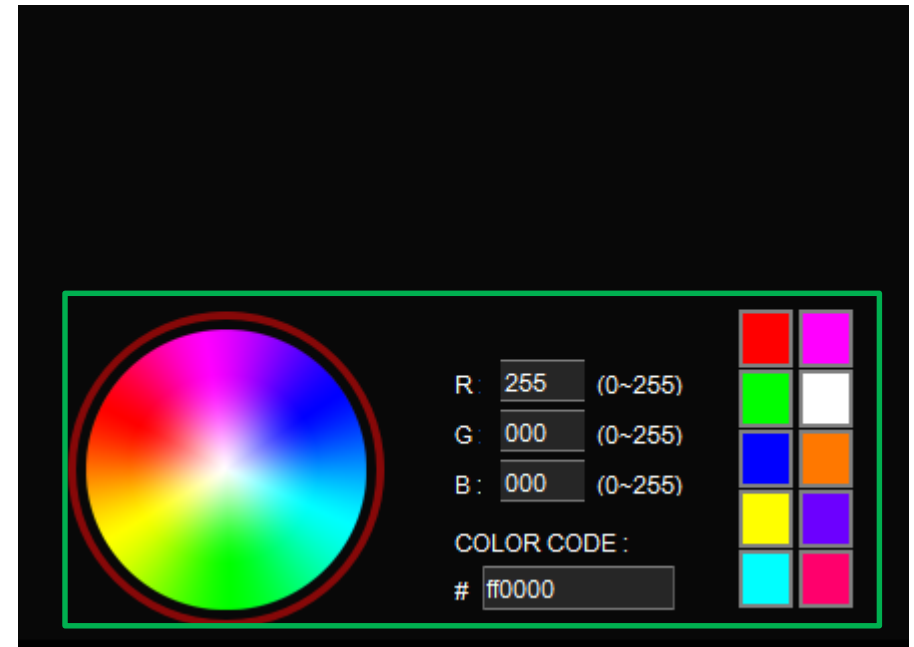
Step 1:

Select "Raindrops Area" in the Lighting Effect drop-down list.



Step 2:

Click on a color inside the color wheel or enter the RGB color values to change the color.



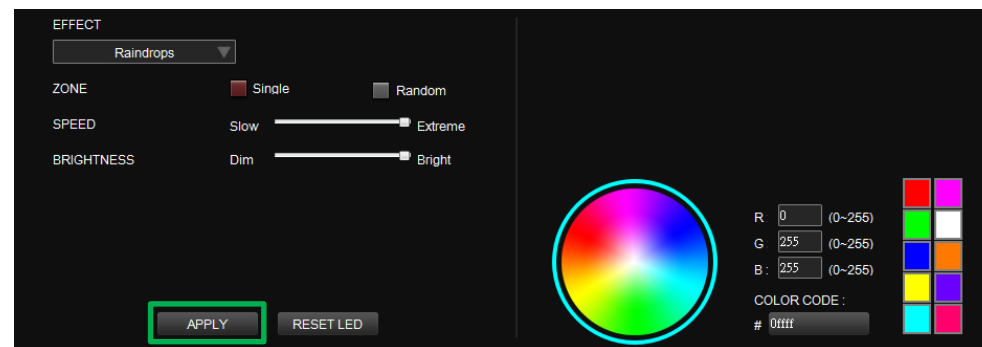


Step 3:

Set the speed and brightness level of the backlight.

Step 4:

Click Apply to save the new settings.



Step 1:

Select "Snake" in the Lighting Effect drop-down list.



Step 2:

Click on a color inside the color wheel or enter the RGB color values to change the color.

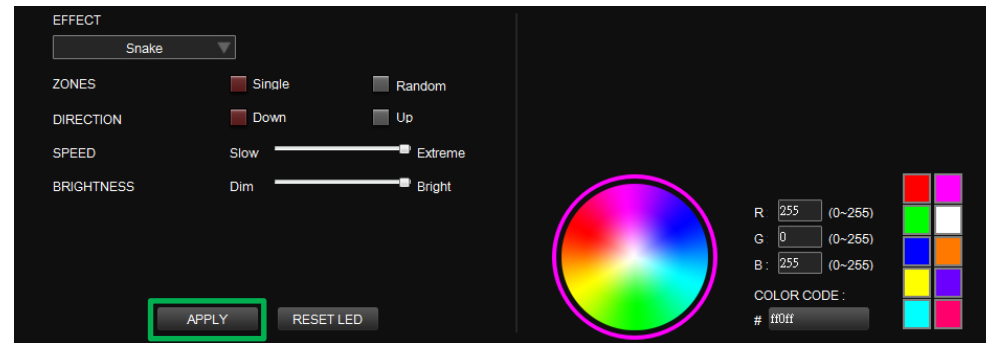
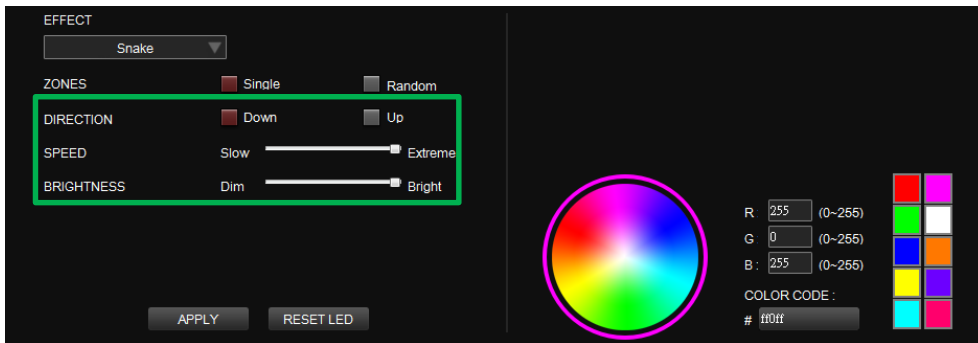


Step 3:

Set the direction, speed, and brightness level of the lighting effect.

Step 4:

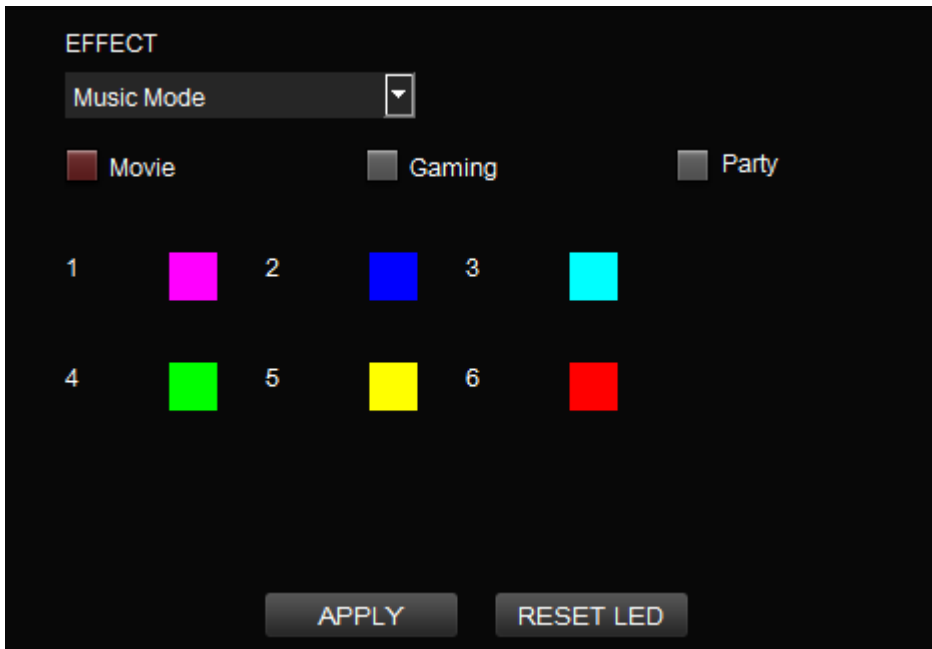
Click Apply to save the new settings.





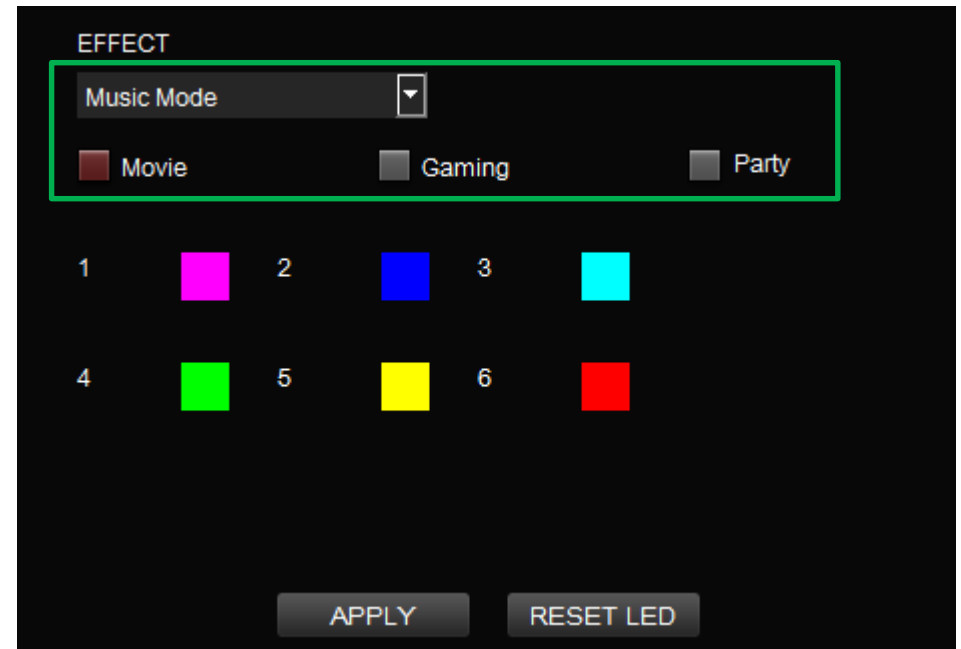
Step 1:

Select "Music Mode" in the Lighting Effect drop-down list.



Step 2:

Set the desired mode of lighting effects.



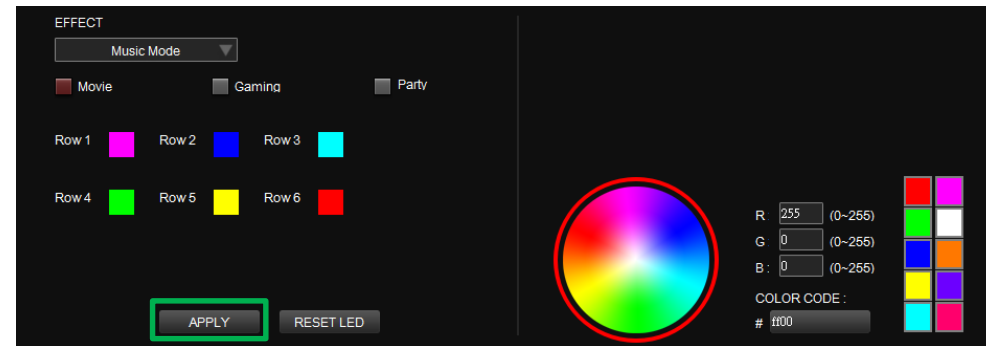
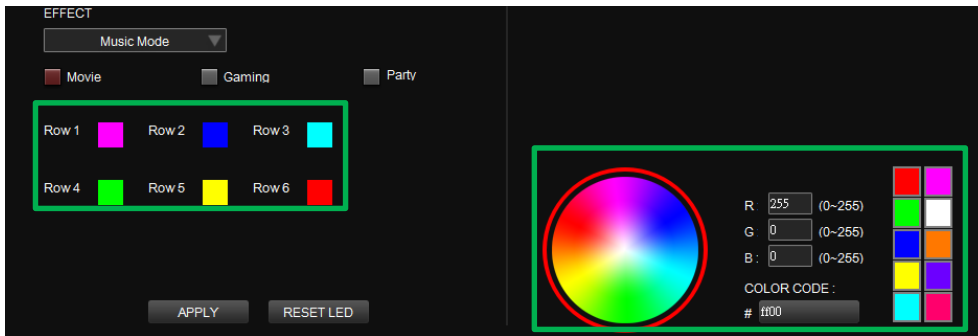


Step 3:

Click on a color inside the color wheel or enter the RGB color values to change the color of each row.

Step 4:

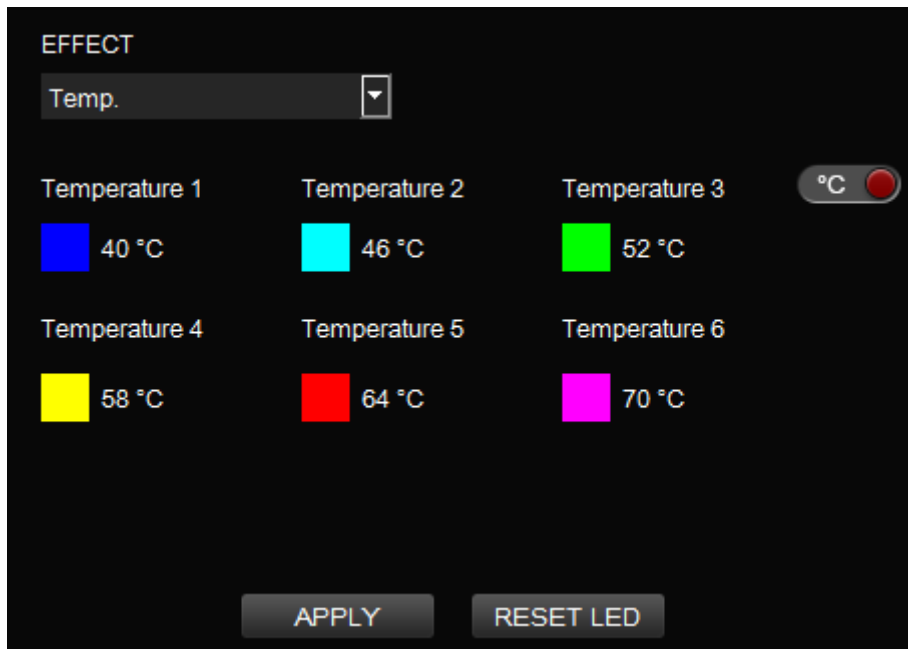
Click Apply to save the new settings.





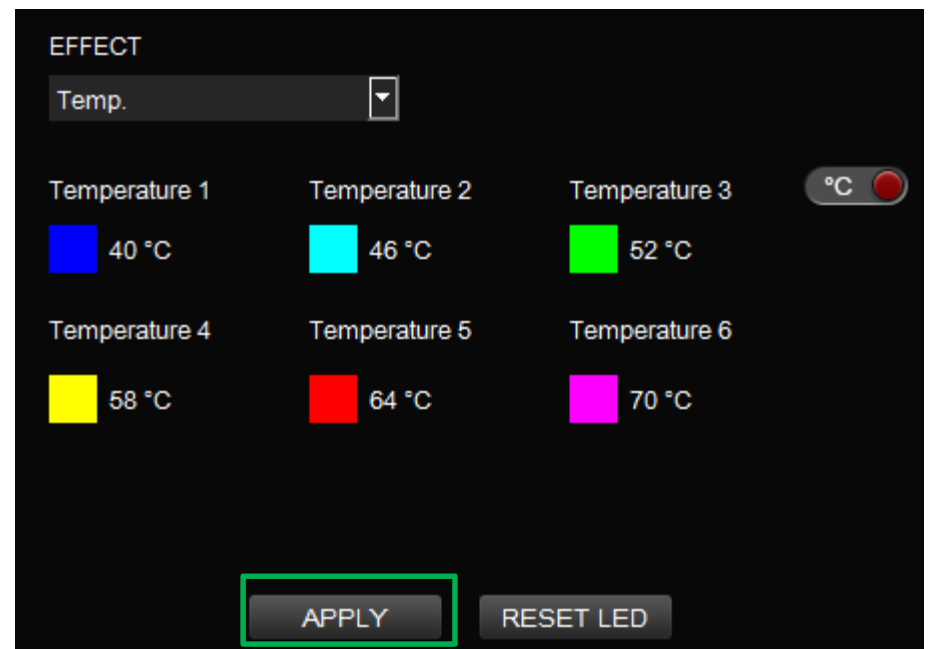
Step 1:

Select "System Temperature" in the Lighting Effect drop-down list.



Step 2:

Click Apply to save the new settings.



| Chapter 5: Functions Available on the Settings Page



Language Settings

Sets the language of the program's user interface.

Official Website / Social Media

Official Website: Visit the Product official website.

Social Media: Visit Thermaltake on Facebook.

Software Version / Firmware Version

Software Version: Displays the version number of the installed program.

Firmware Version: Displays the version number of the driver.

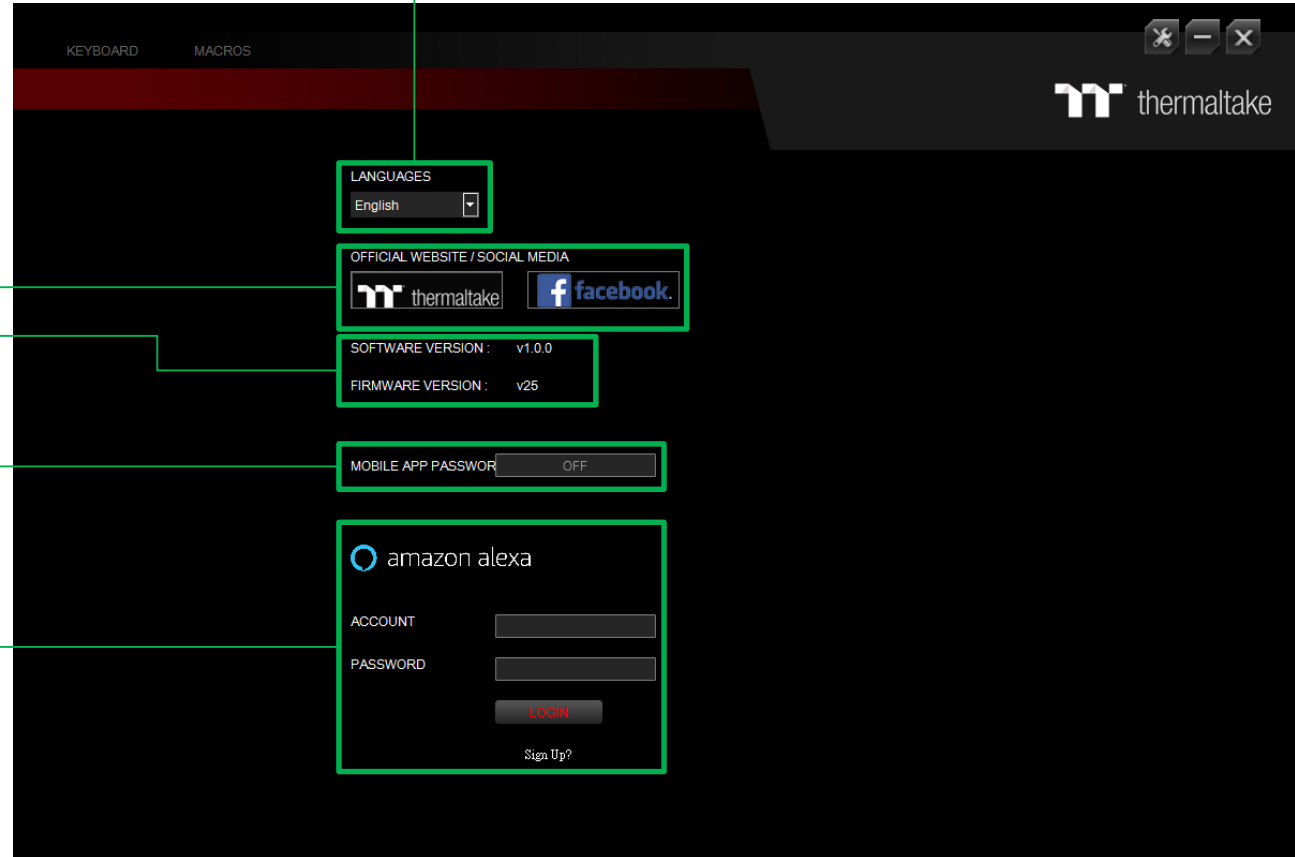
TT iTAKE APP Password Setting

Enter four number or English alphabet.

✘ Empty is disable function.

Amazon Alexa Login

TT iTAKE software support Amazon Alexa voice service, allowing you to control the lights by talking to the Alexa Enabled device.



Thank You