

# ARGENT MP1 **RGB** Gaming Mouse Pad User Guide

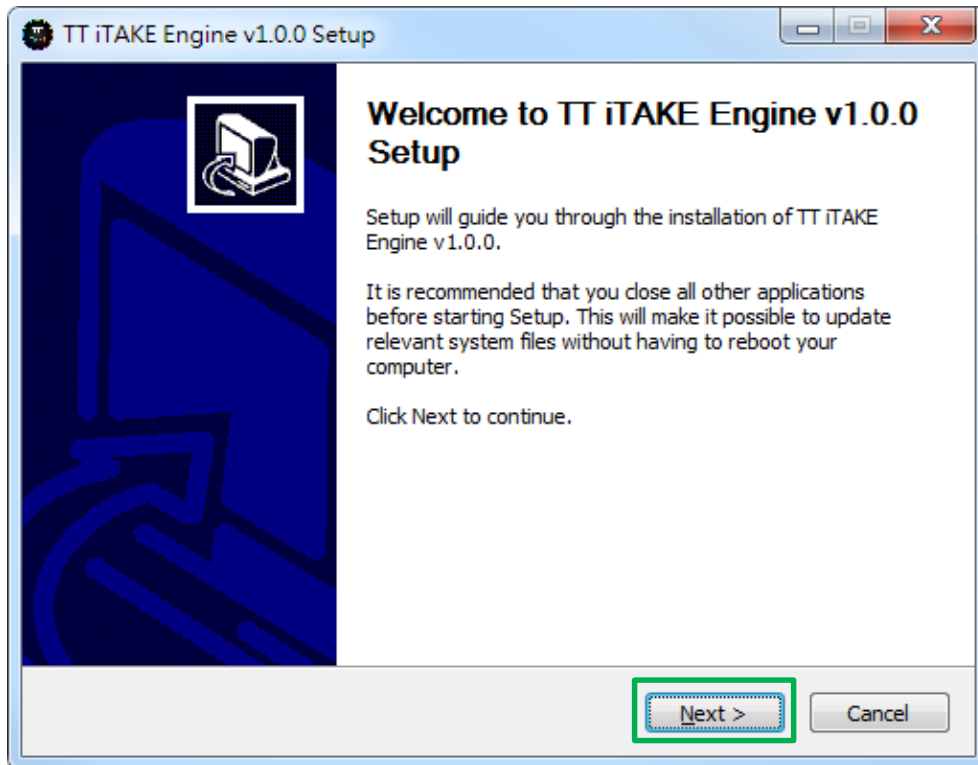


<b>PAGE 03</b>	<b>TT iTAKE Installation</b>	
<b>PAGE 06</b>	<b>Functions Available on the Home Page</b>	
<b>PAGE 08</b>	<b>Functions Available on the Lighting Effects Page</b>	
<b>PAGE 10</b>	<b>Lighting Effects Overview</b>	
	• Static	----- 11
	• Pulse	----- 15
	• Blink	----- 19
	• Spiral Rainbow	----- 23
	• RGB Spectrum	----- 27
	• Raindrops	----- 28
	• Snake	----- 30
	• Music Mode	----- 32
	• Temp.	----- 34
<b>PAGE 35</b>	<b>Functions Available on the Settings Page</b>	

# | Chapter 1: TT iTAKE Installation

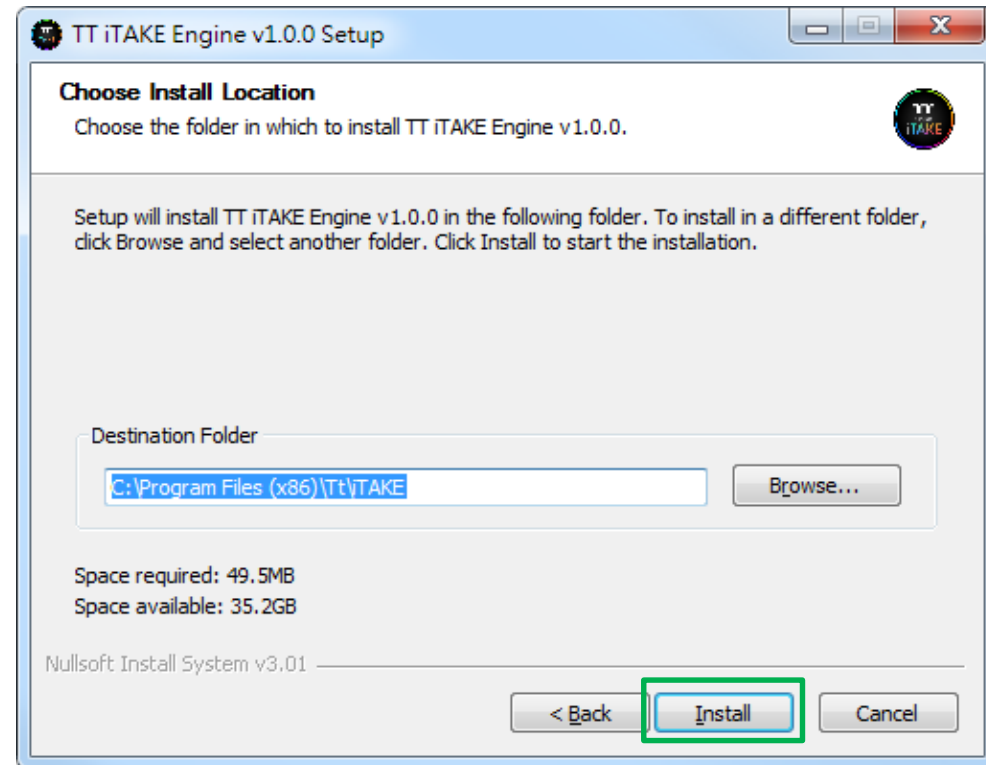
### Step 1:

Launch the setup executable file (.EXE) file and click Next.



### Step 2:

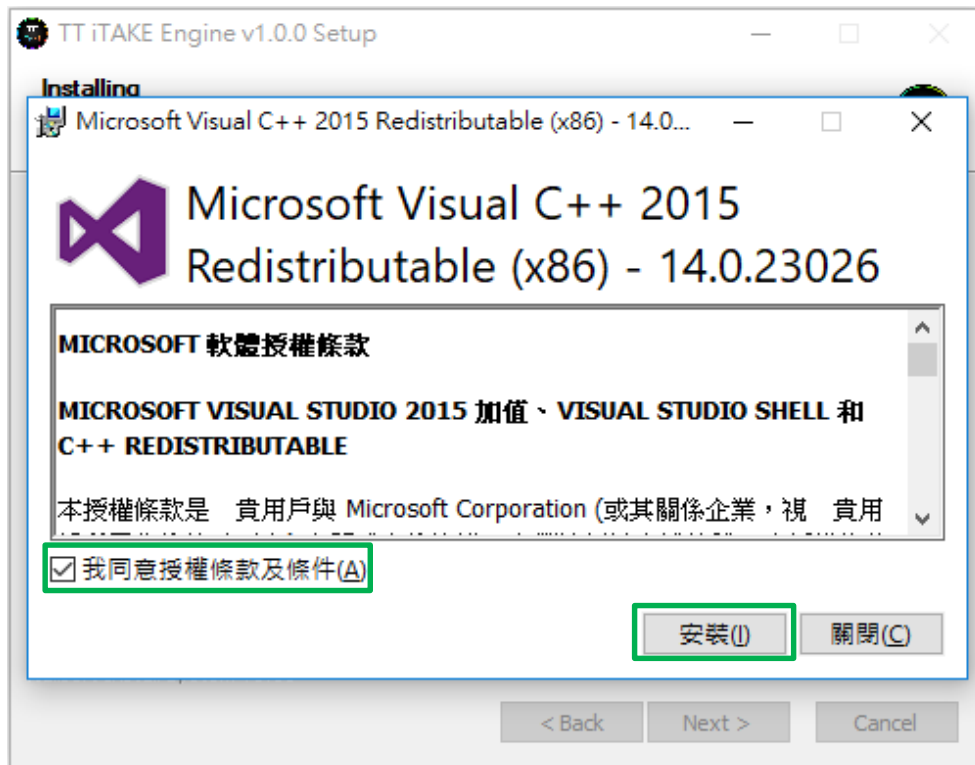
Click Install to begin the setup process.



### Step 3:

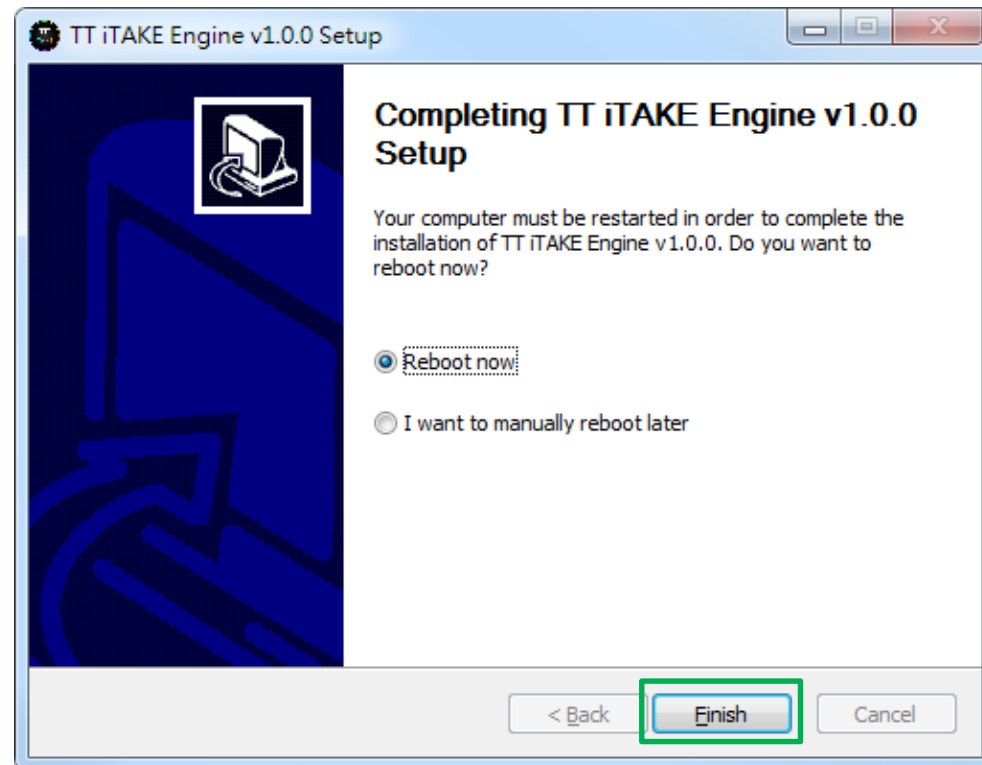
Once setup is complete, you will also need to install the Microsoft Visual C++ 2015 Redistributable Package.

✗ Without installing the Redistributable Package, the software will fail to launch.



### Step 4:

Click Finish to complete the installation.



## | Chapter 2: Functions Available on the Home Page

### Switching the Home Page

You can switch the configurations between different Thermaltake products

### Switching Profiles

The ARGENT MP1 RGB mouse pad can support up to 6 profiles, which can be switched as required.

### Lighting Configuration

Lighting effects.

### Functions for Managing Profiles

Up to 15 profiles can be added for use. The functions of each button from left to right are:

**Add:** Create a new profile.

**Delete:** Delete an existing profile.

**Copy:** Copy a profile.

**Import:** Import a profile.

**Export:** Export a profile.

### Correcting the Name of a Profile

The name of a new profile can be modified directly.

### PC IP Address

Use the TT iTAKE APP to enter the IP for control.

### Other Settings / Shrink Window / Close Window

**Other Settings:** Software version, firmware version, Amazon Alexa setting and switching the language used for the user interface.

**Shrink Window:** Close the display and minimize the program to the taskbar.

**Close Window:** Close the display and minimize the program to the lower right corner.



### Lighting Effect Configuration Menu

Setup lighting effects.

# | Chapter 3: Functions Available on the Lighting Effects Page



### Switching Lighting Effects

9 lighting effects are supported: Static, Pulse, Blink, Spiral Rainbow, RGB Spectrum, Raindrops, Snake, Music Mode, and Temp.

### Lighting Effects Configurations

Can be used to adjust the color, direction, speed, and brightness level of the lighting effect within an area; can also be used to switch to random colors.

### Apply / Restore Lighting Effect Settings

**Apply:** Apply the new lighting effect settings.

**Restore Lighting Effect Settings:** All lighting effect settings saved under the current profile will be restored to factory default values.

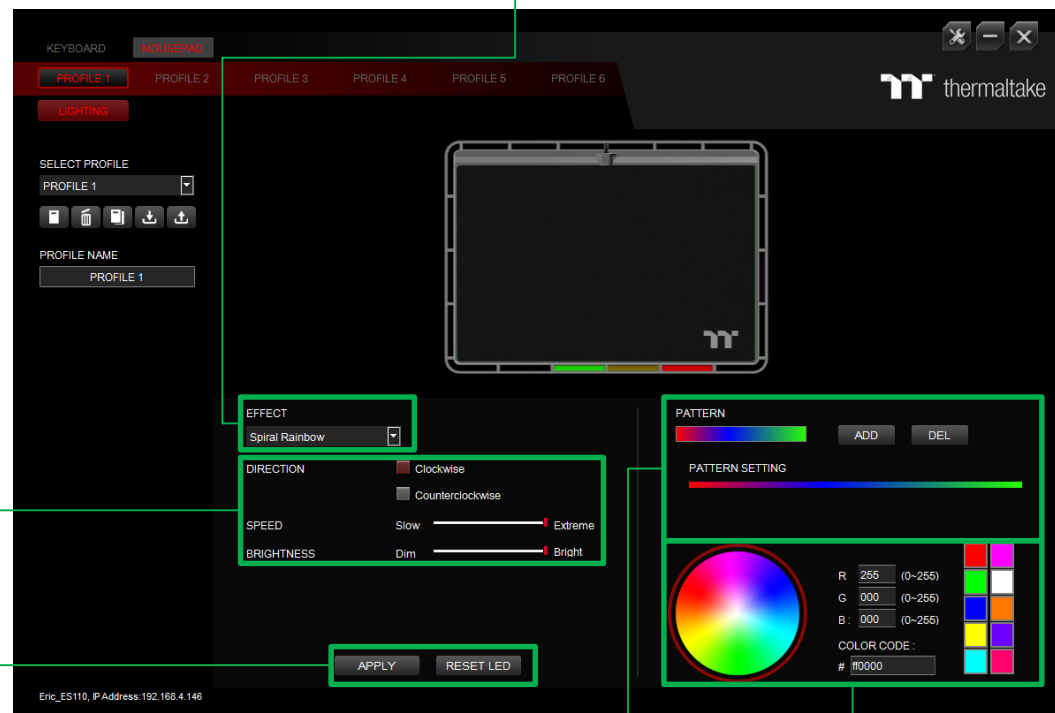
### Color Pattern Settings

**Add Pattern:** Add a new pattern with red to black gradient.

**Delete Pattern:** Delete the currently selected color pattern.

**Insert Color Point:** Add a red color point to the color pattern.

**Delete Color Point:** Delete the selected color point from the color pattern.



### Color Wheel Settings

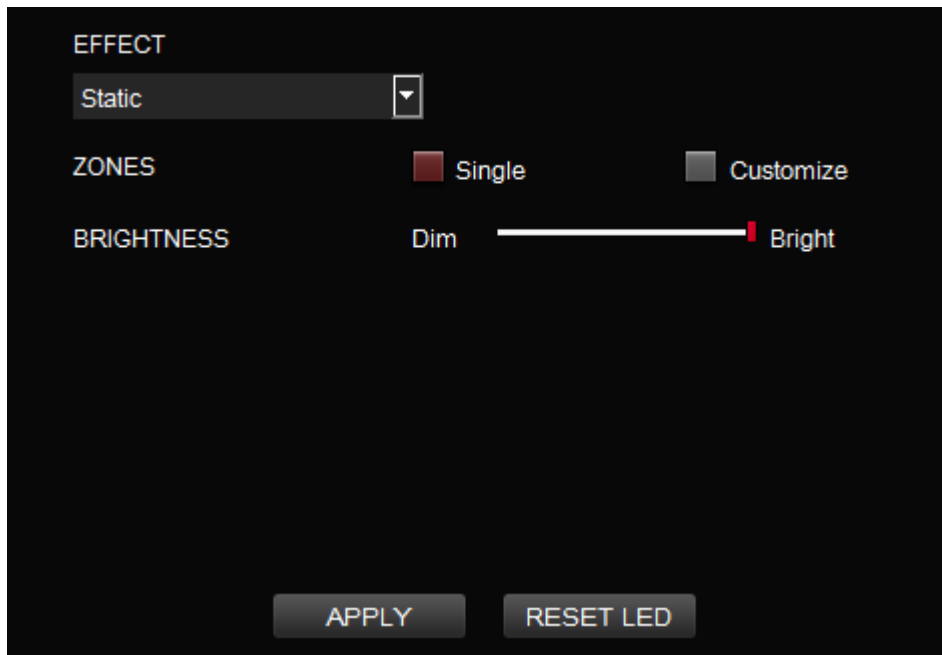
You can select a color from the color wheel directly or enter RGB color values to adjust the color of the lighting effect.

# | Chapter 4: Lighting Effects Overview



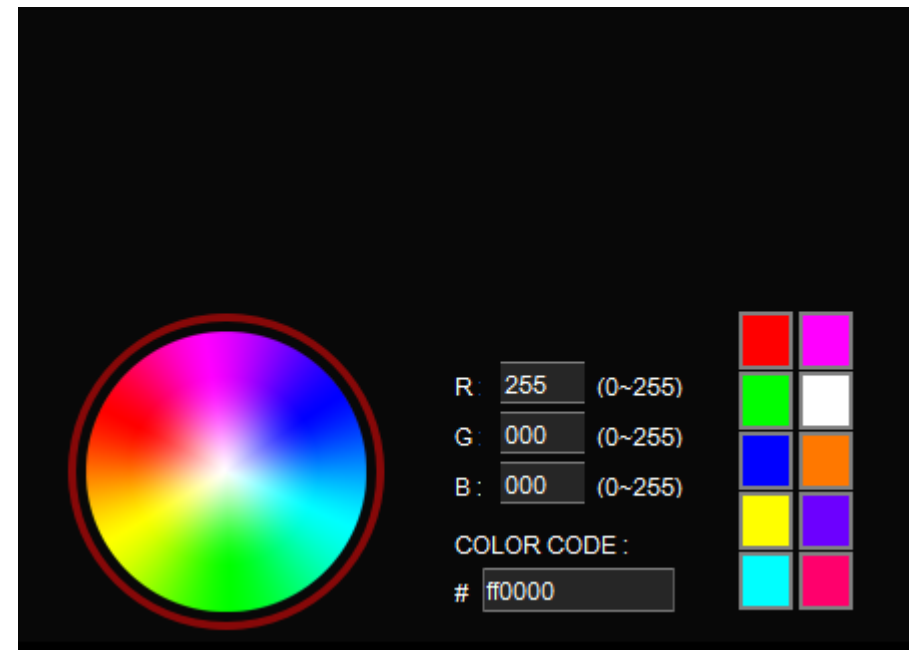
## Step 1:

Select "Static Area" in the Lighting Effect drop-down list.



## Step 2:

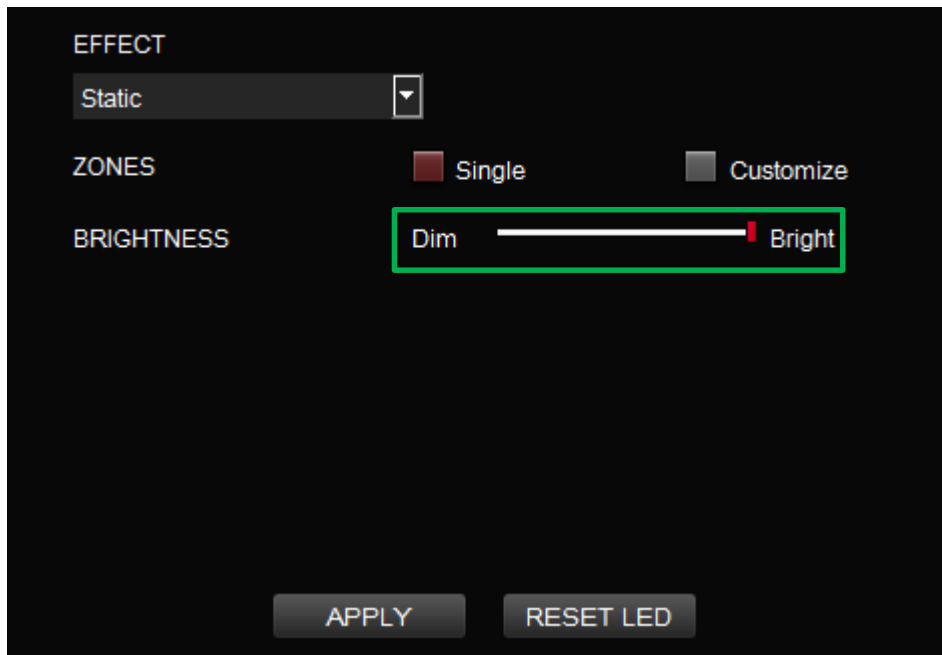
Click on a color inside the color wheel or enter the RGB color values to change the color.





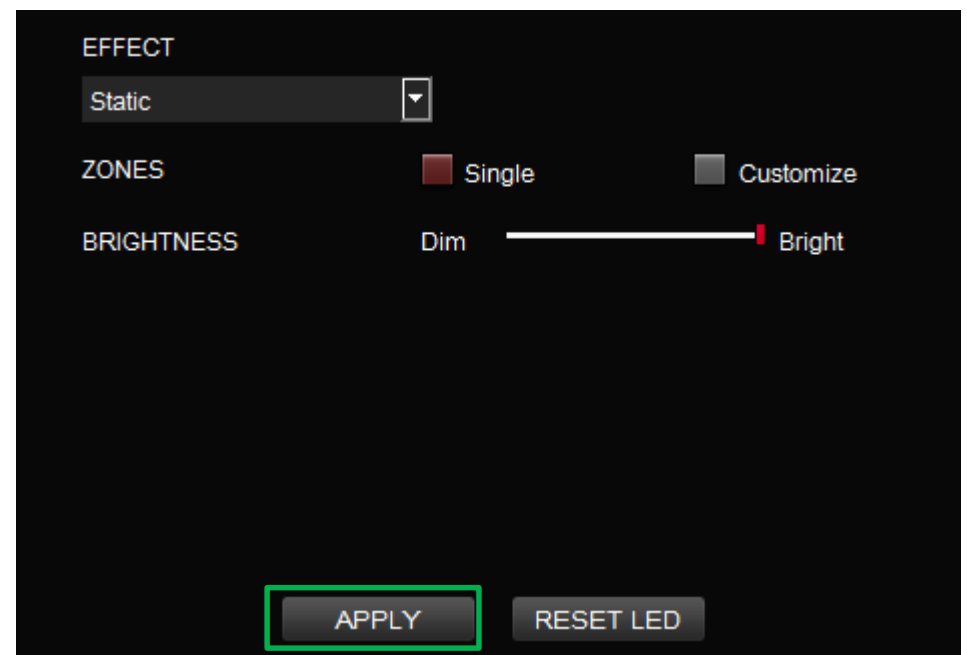
### Step 3:

Adjust the brightness level of the backlight.



### Step 4:

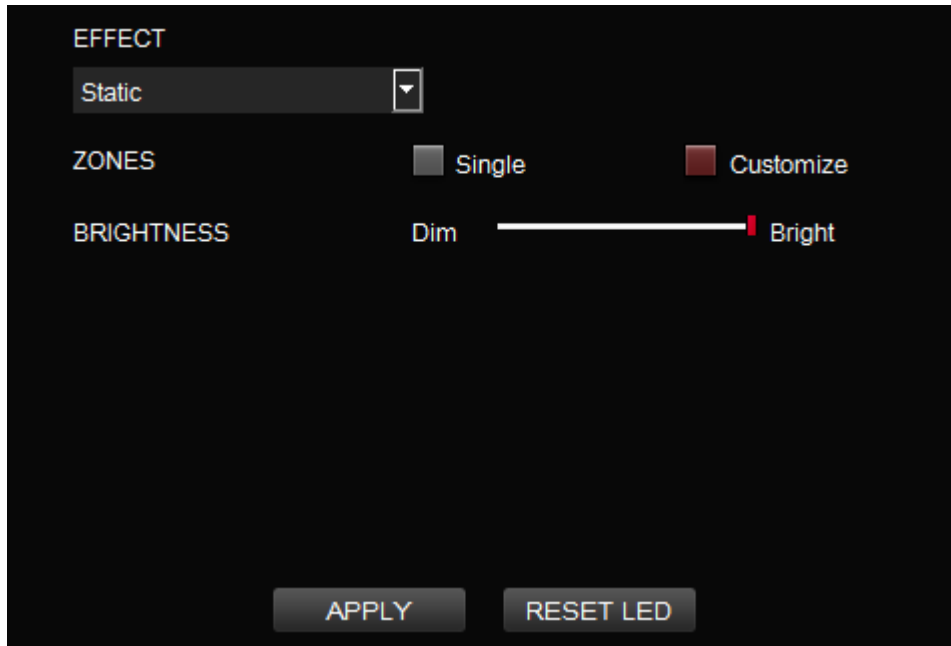
Click Apply to save the new settings.





### Step 1:

Switch the zones to "Customized."



### Step 2:

Click on a color inside the color wheel or enter the RGB color values to set the color.





### Step 3:

Click on the mouse pad image directly with the left mouse button to change the color.

✘ Right click to cancel the color.

### Step 4:

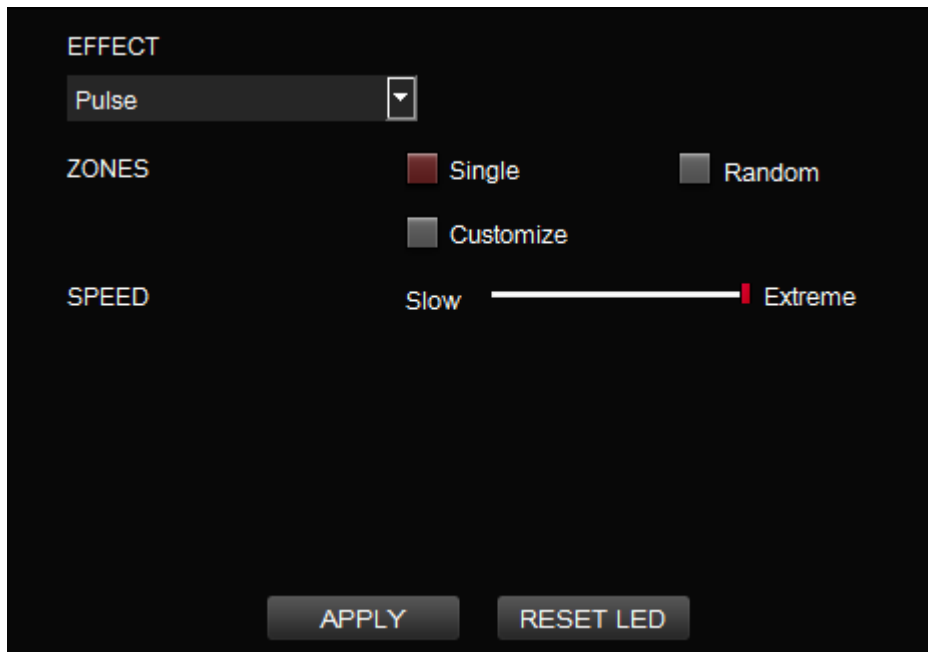
Click Apply to save the new settings.





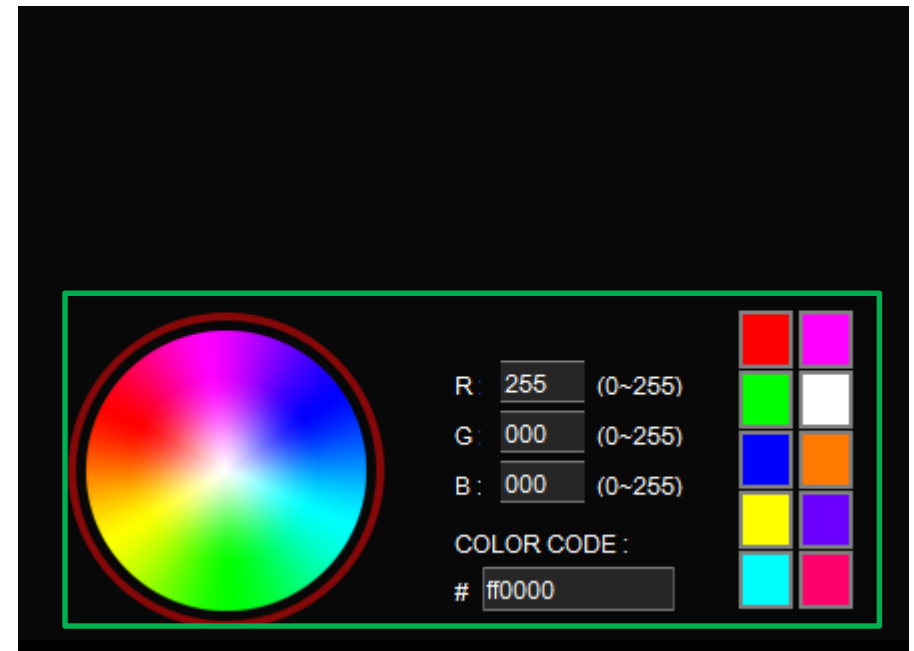
## Step 1:

Select "Pulse Area" in the Lighting Effect drop-down list.



## Step 2:

Click on a color inside the color wheel or enter the RGB color values to change the color.



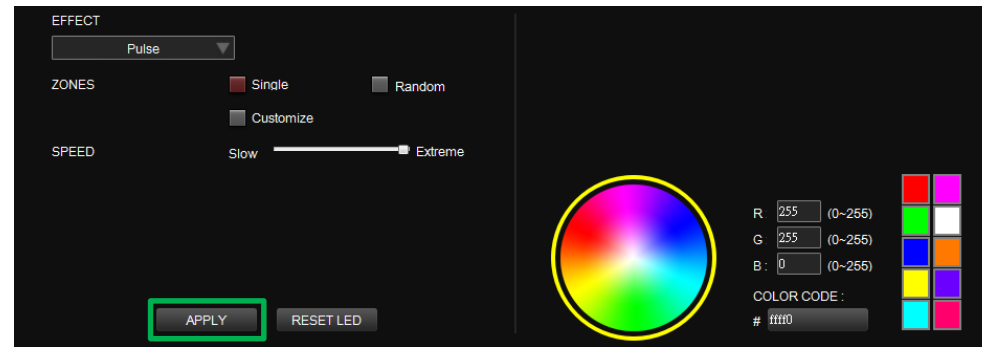
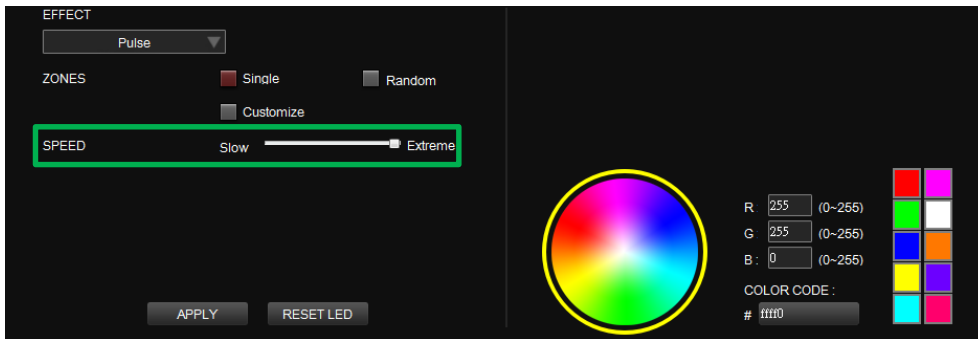


### Step 3:

Adjust the backlight speed.

### Step 4:

Click Apply to save the new settings.



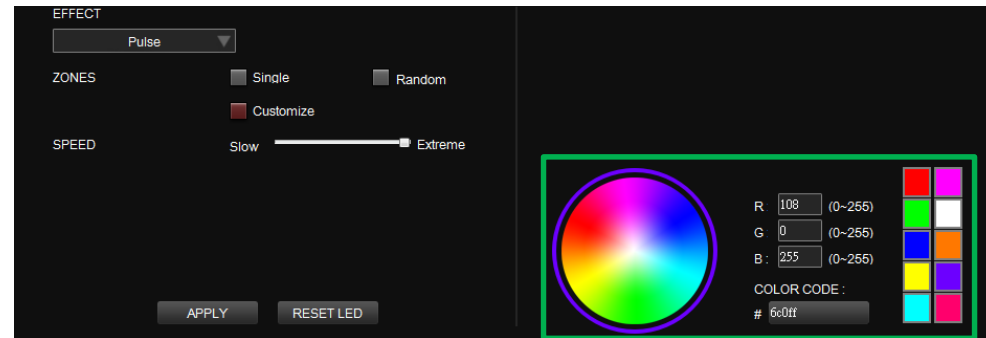
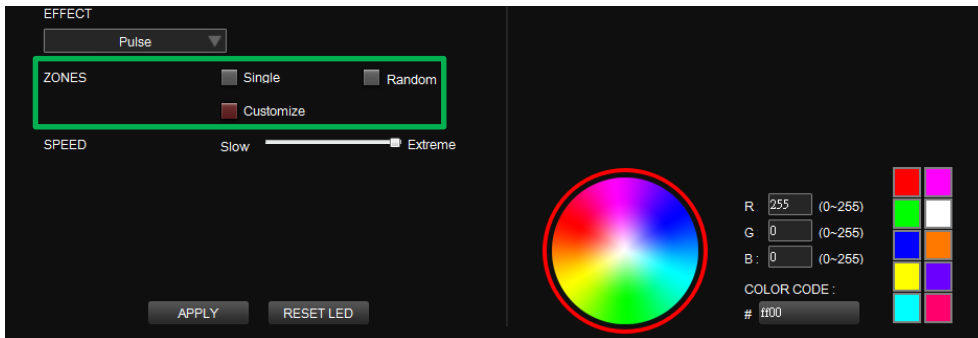


## Step 1:

Switch the zones to "Customized."

## Step 2:

Click on a color inside the color wheel or enter the RGB color values to set the color.





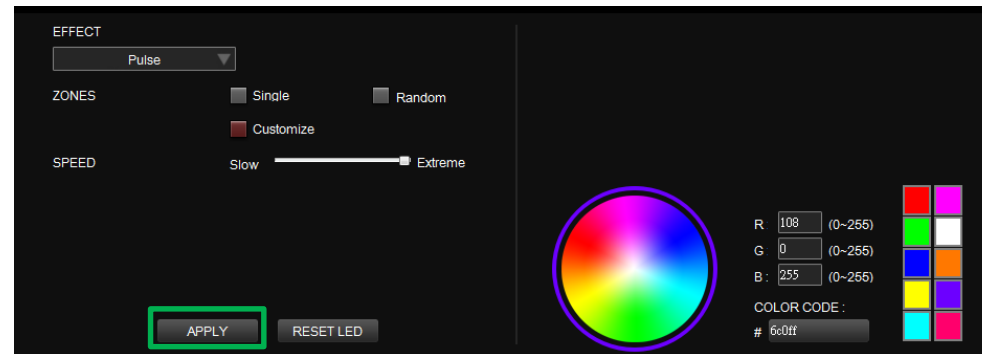
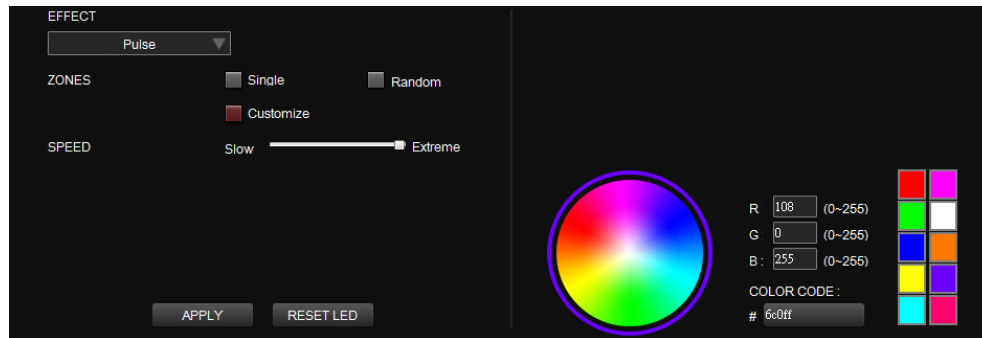
### Step 3:

Click on the mouse pad image directly with the left mouse button to change the color.

✘ Right click to cancel the color.

### Step 4:

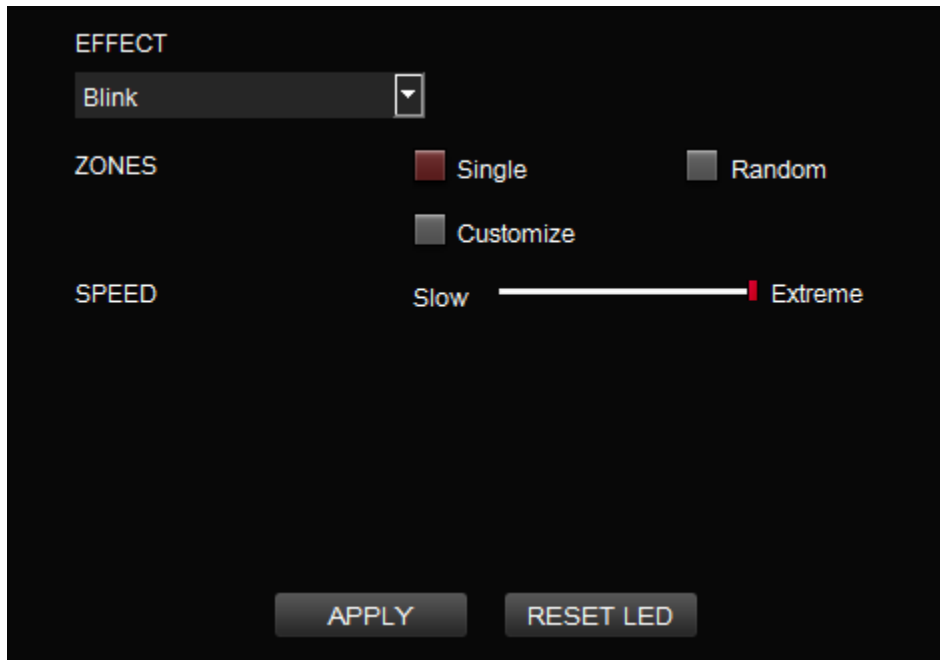
Click Apply to save the new settings.





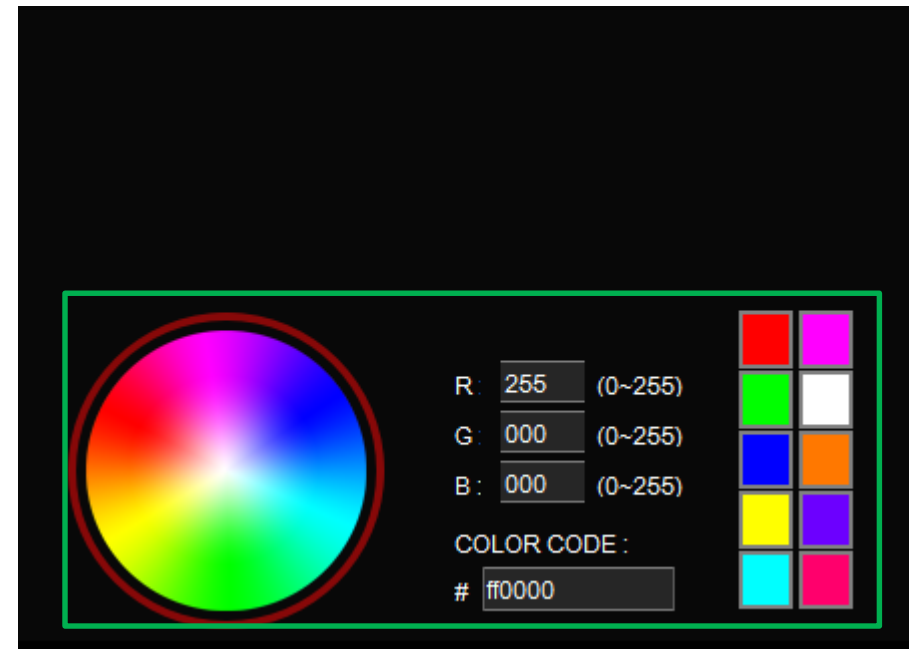
## Step 1:

Select "Blink Area" in the Lighting Effect drop-down list.



## Step 2:

Click on a color inside the color wheel or enter the RGB color values to change the color.



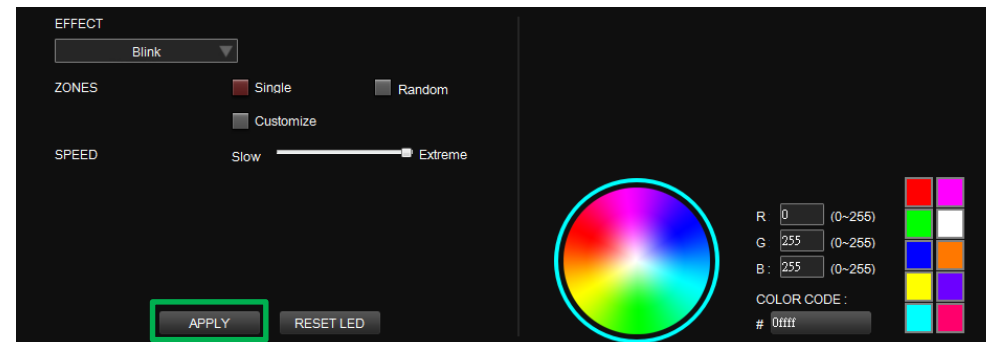
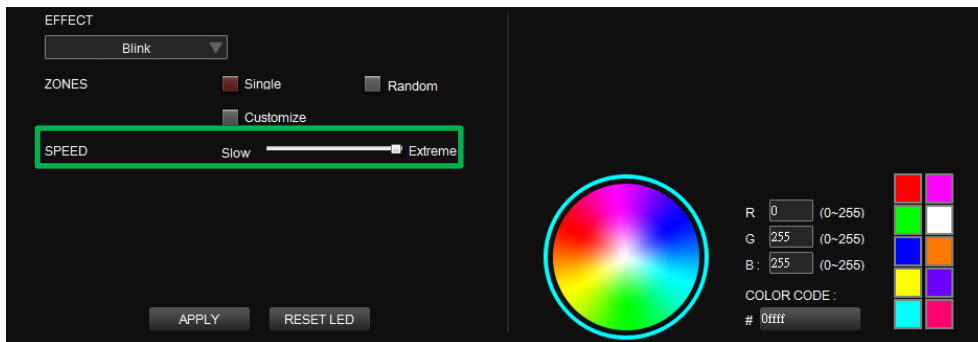


### Step 3:

Adjust the backlight speed.

### Step 4:

Click Apply to save the new settings.

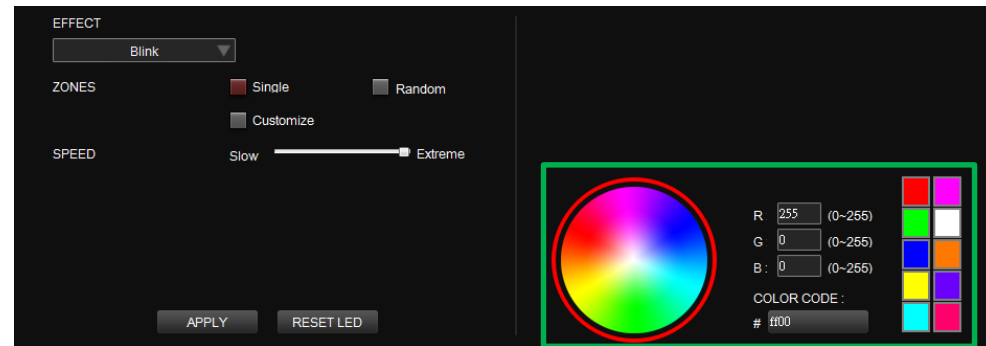
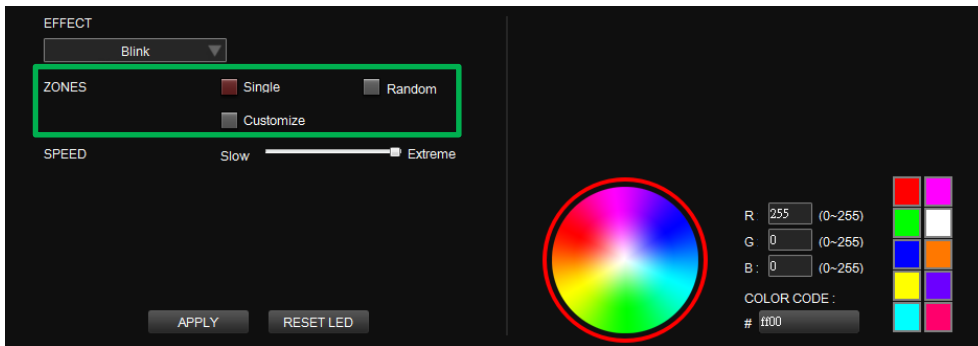


## Step 1:

Switch the zones to "Customized."

## Step 2:

Click on a color inside the color wheel or enter the RGB color values to set the color.





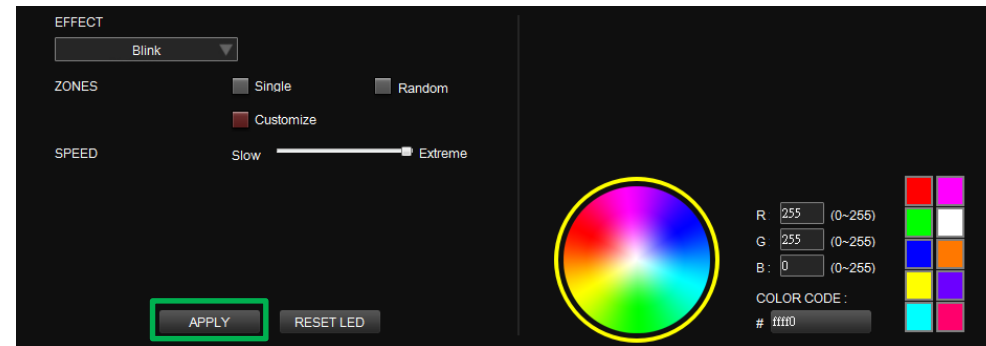
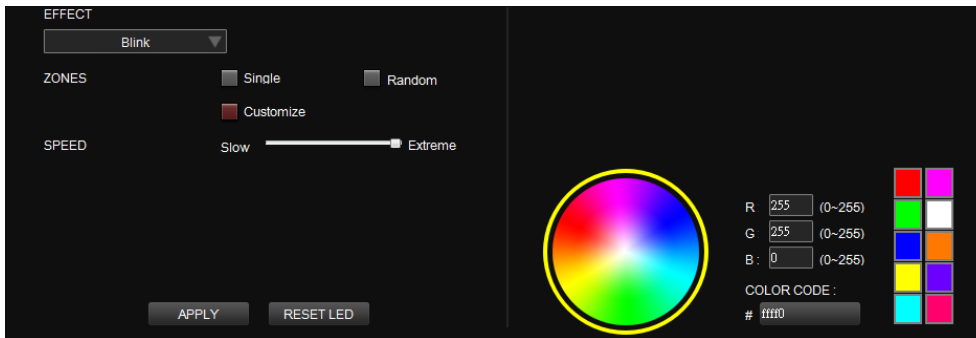
### Step 3:

Click on the mouse pad image directly with the left mouse button to change the color.

✘ Right click to cancel the color.

### Step 4:

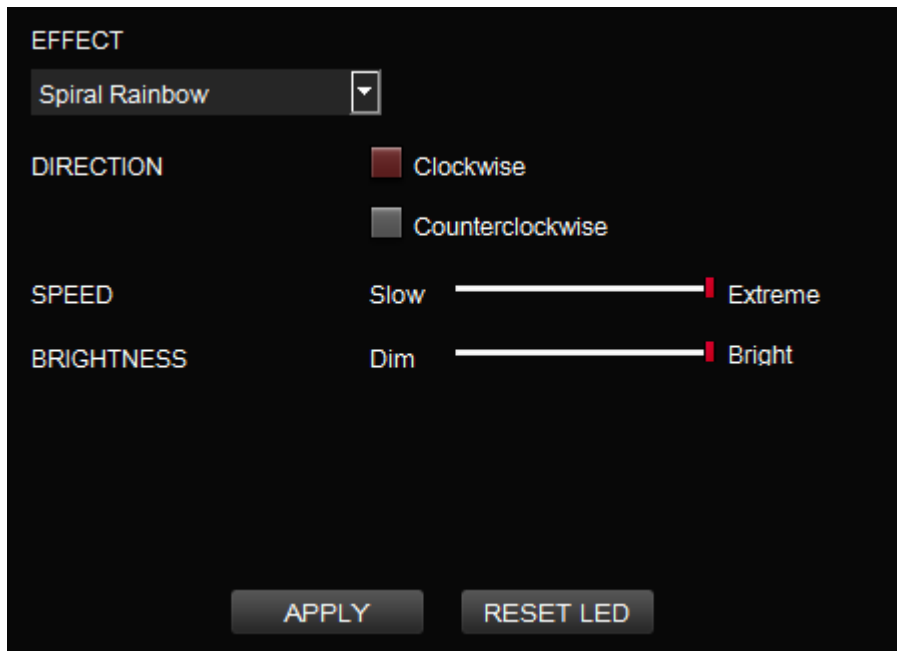
Click Apply to save the new settings.





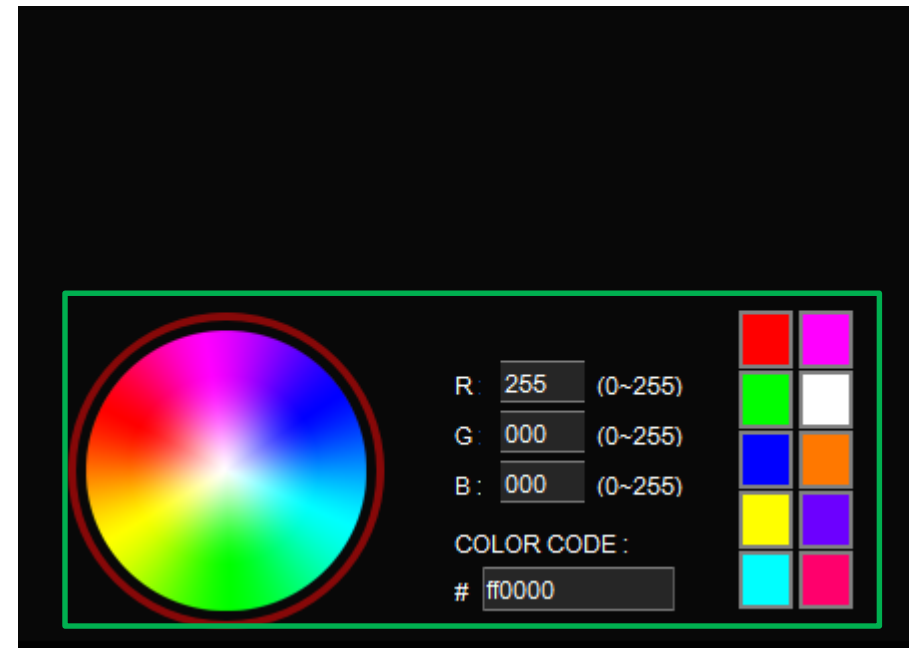
### Step 1:

Select "Spiral Rainbow Area" in the Lighting Effect drop-down list.



### Step 2:

Select a set of color patterns on the upper-right.



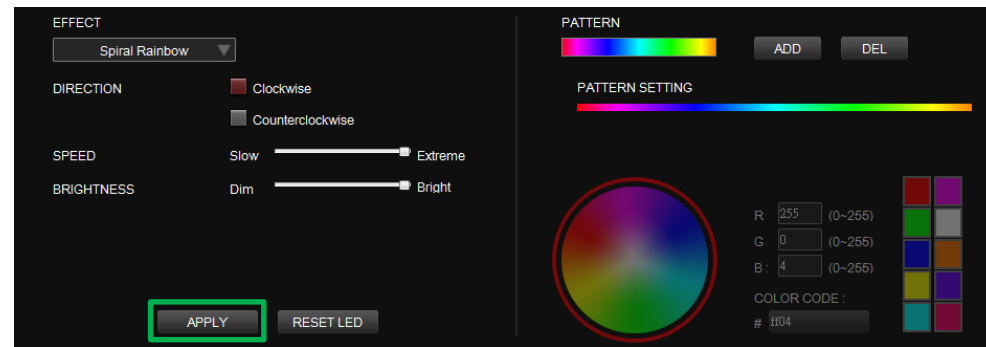
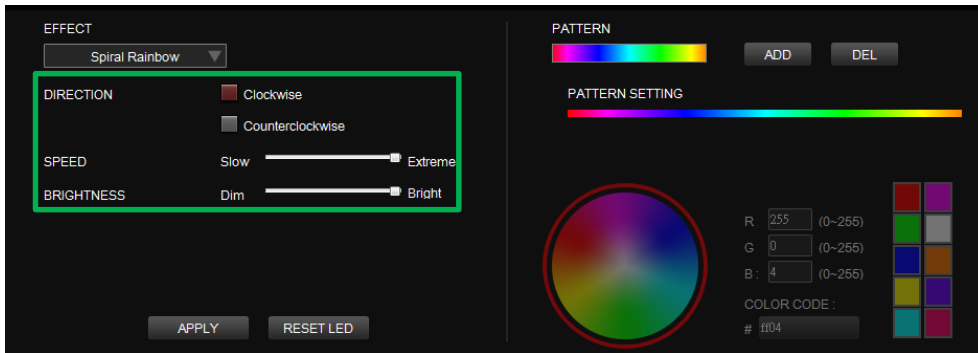


### Step 3:

Set the direction, speed, and brightness level of the lighting effect.

### Step 4:

Click Apply to save the new settings.





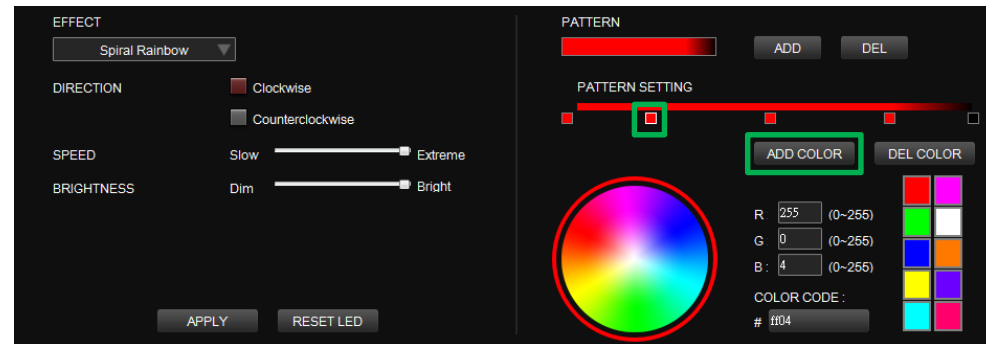
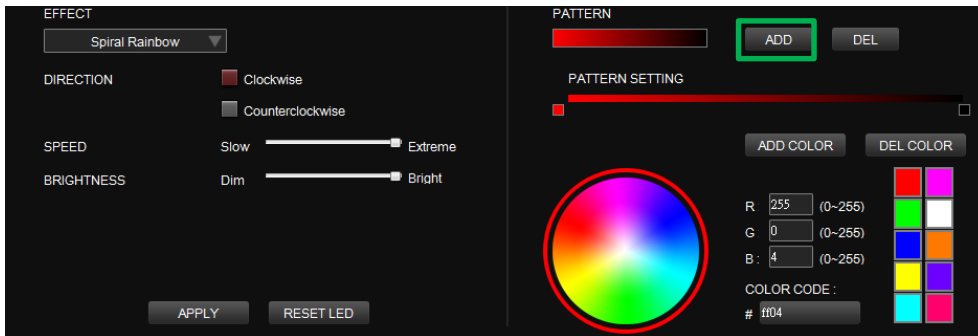


### Step 1:

Add a new set of color patterns.

### Step 2:

Add a new color-insertion point and drag it to the desired position.



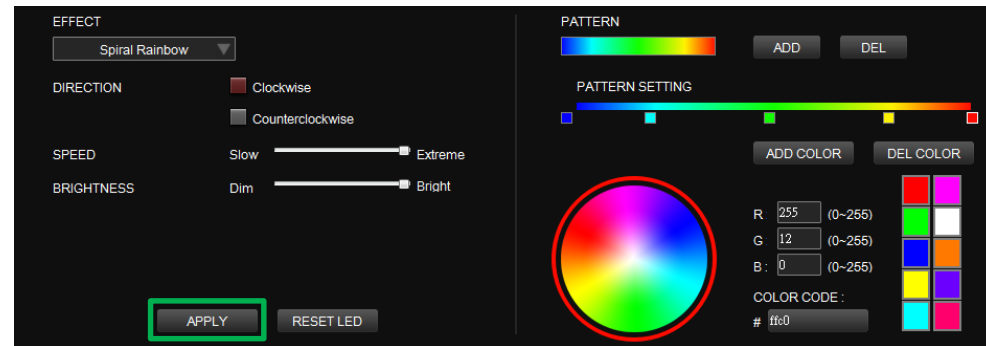
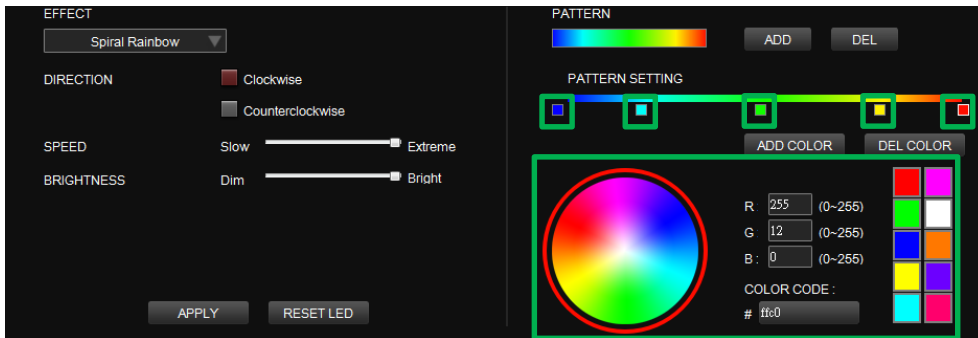


### Step 3:

Click on each color-insertion point to modify its color.

### Step 4:

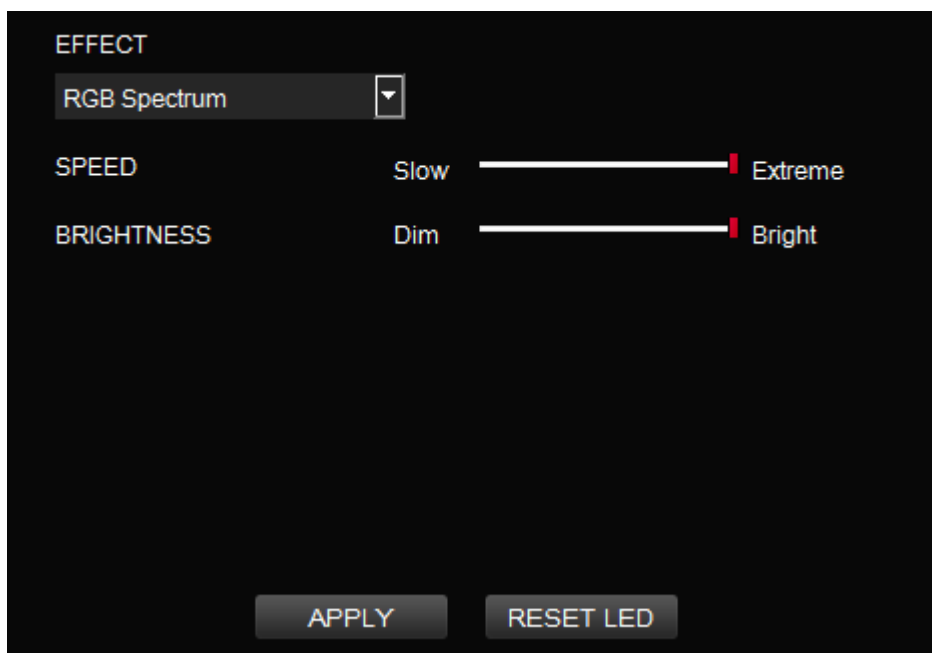
Click Apply to save the new settings.





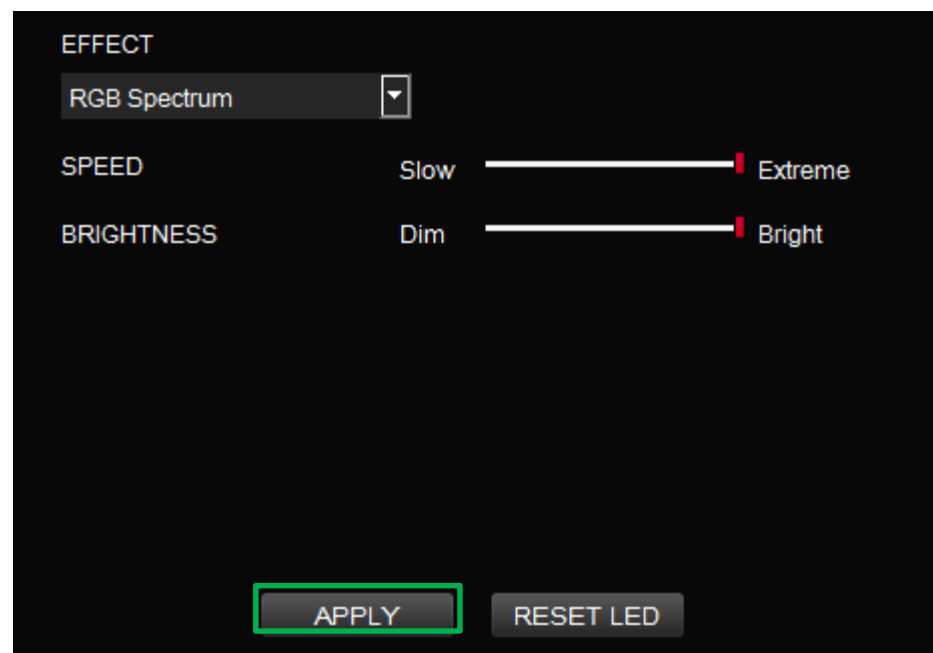
### Step 1:

Select "Spectrum Cycling Area" in the Lighting Effect drop-down list.



### Step 2:

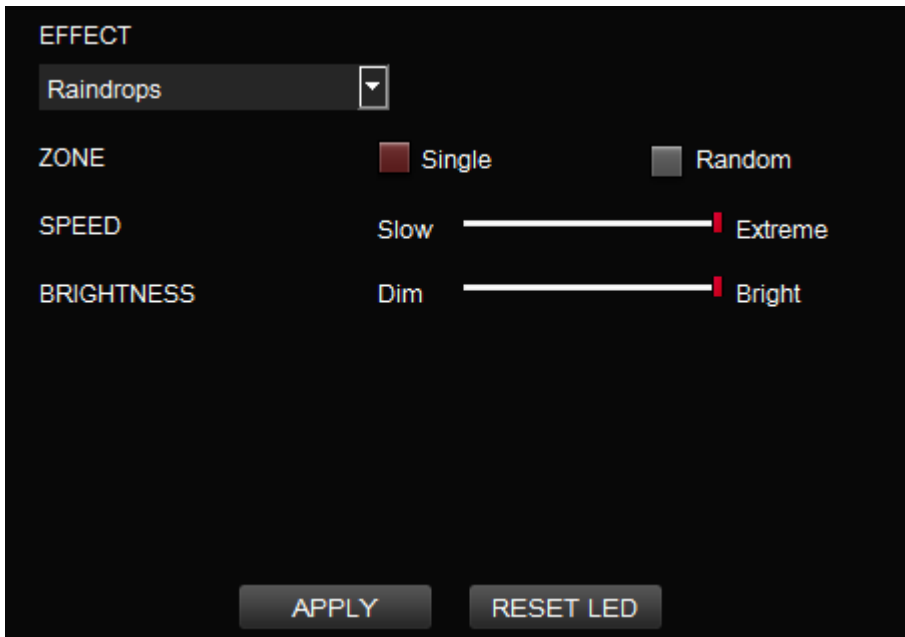
Set the speed and brightness level of the backlight and click on Apply to save the new settings.





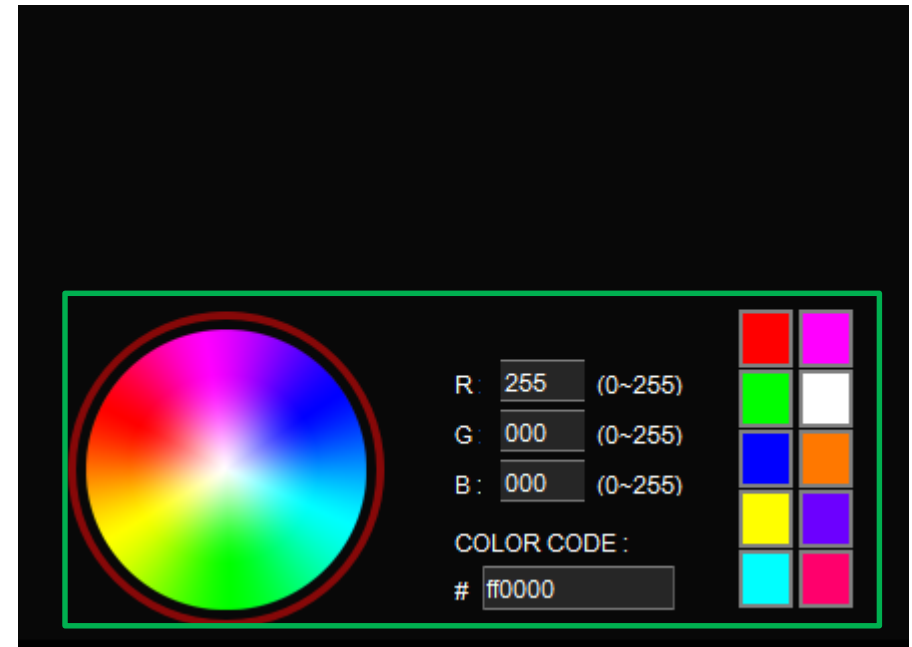
### Step 1:

Select "Raindrops Area" in the Lighting Effect drop-down list.



### Step 2:

Click on a color inside the color wheel or enter the RGB color values to change the color.



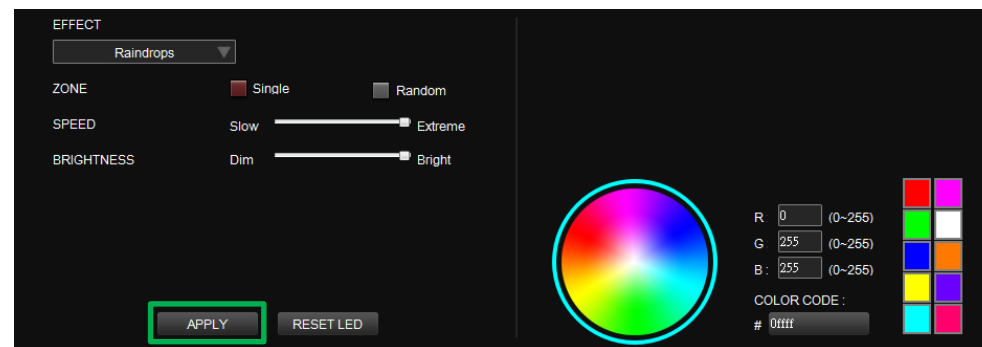


### Step 3:

Set the speed and brightness level of the backlight.

### Step 4:

Click Apply to save the new settings.



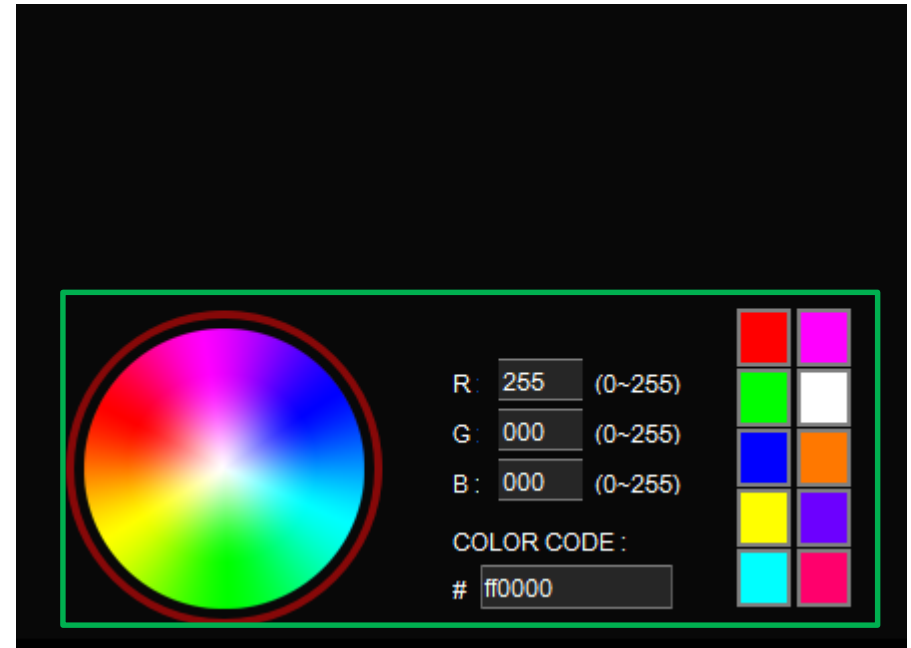
## Step 1:

Select "Snake" in the Lighting Effect drop-down list.



## Step 2:

Click on a color inside the color wheel or enter the RGB color values to change the color.

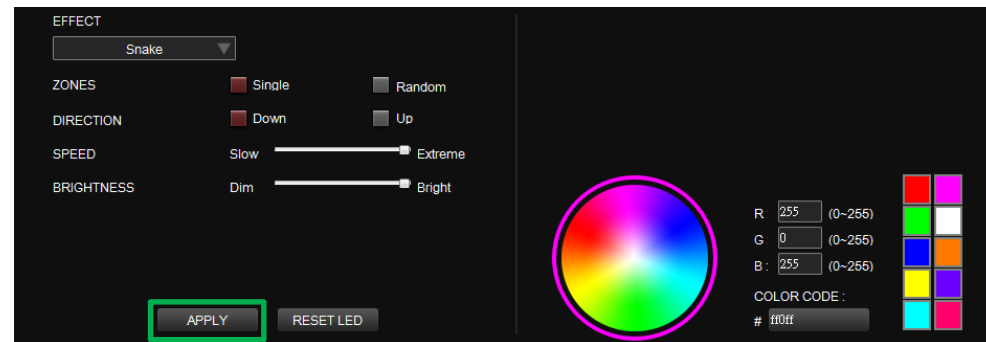
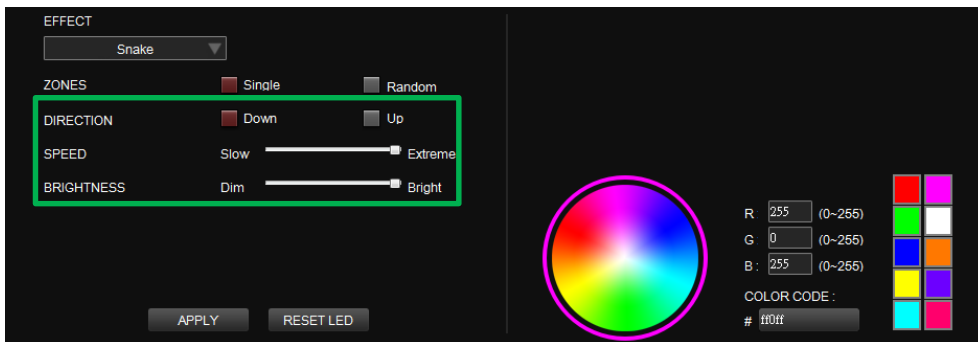


### Step 3:

Set the direction, speed, and brightness level of the lighting effect.

### Step 4:

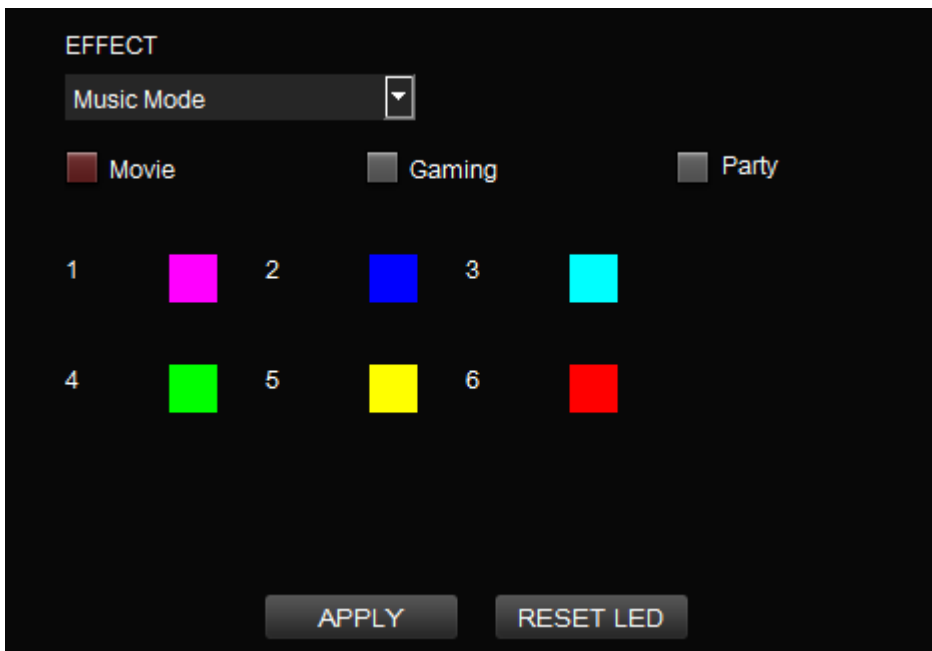
Click Apply to save the new settings.





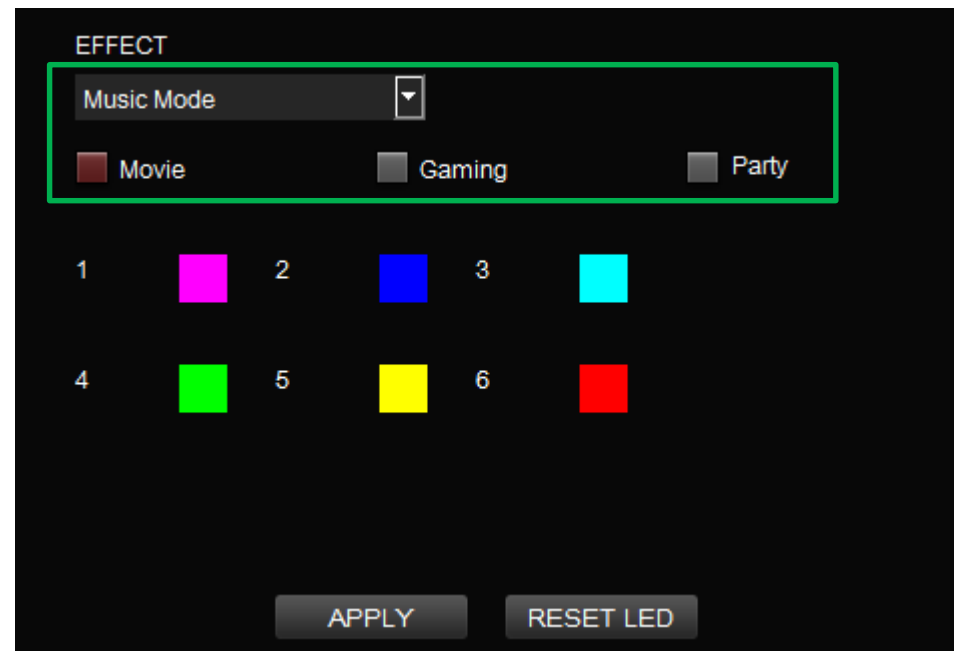
## Step 1:

Select "Music Mode" in the Lighting Effect drop-down list.



## Step 2:

Set the desired mode of lighting effects.





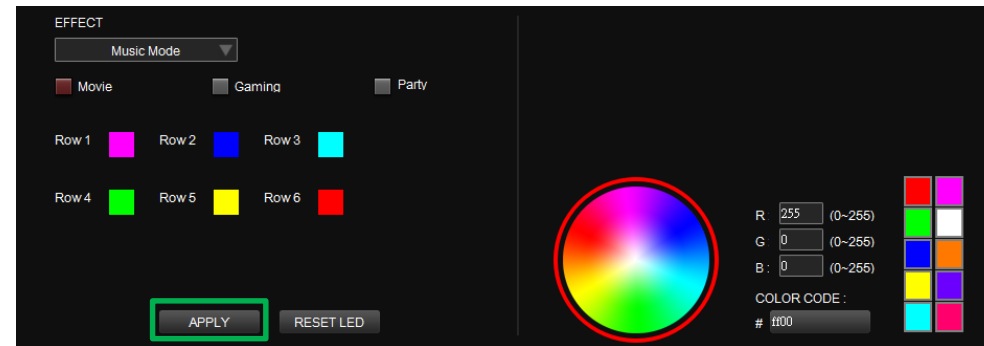
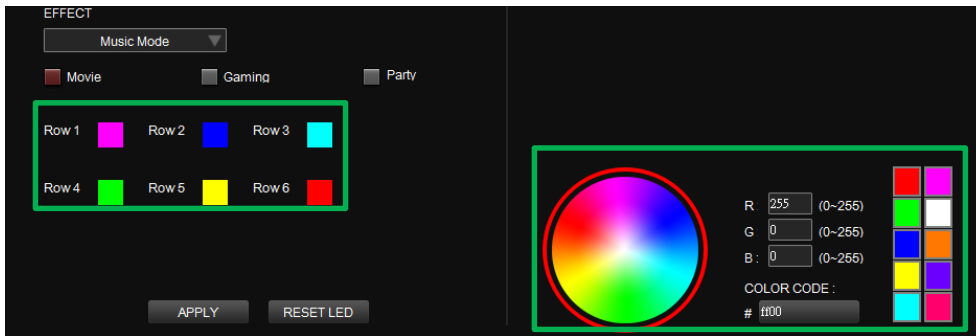


### Step 3:

Click on a color inside the color wheel or enter the RGB color values to change the color of each row.

### Step 4:

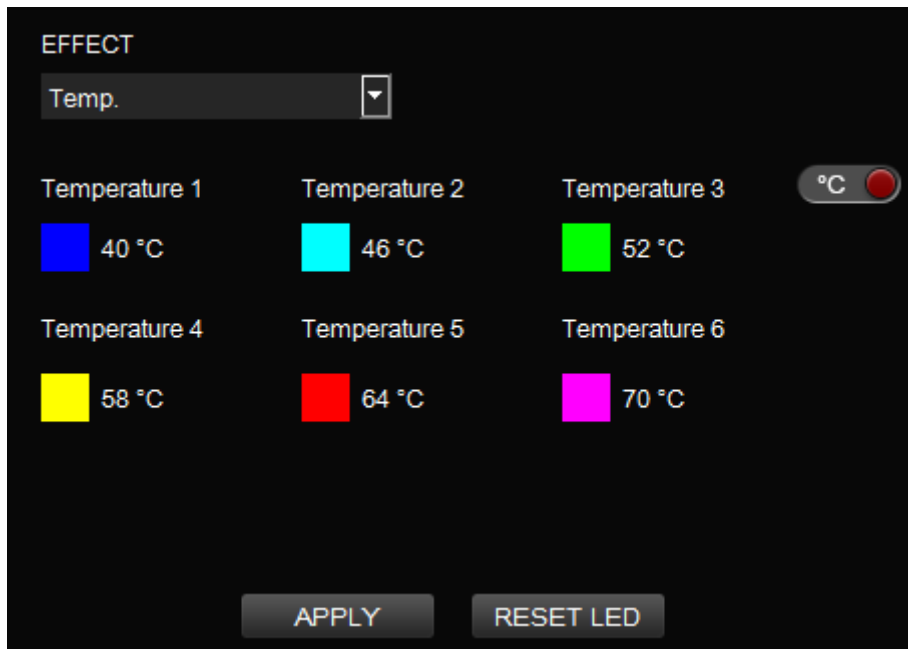
Click Apply to save the new settings.





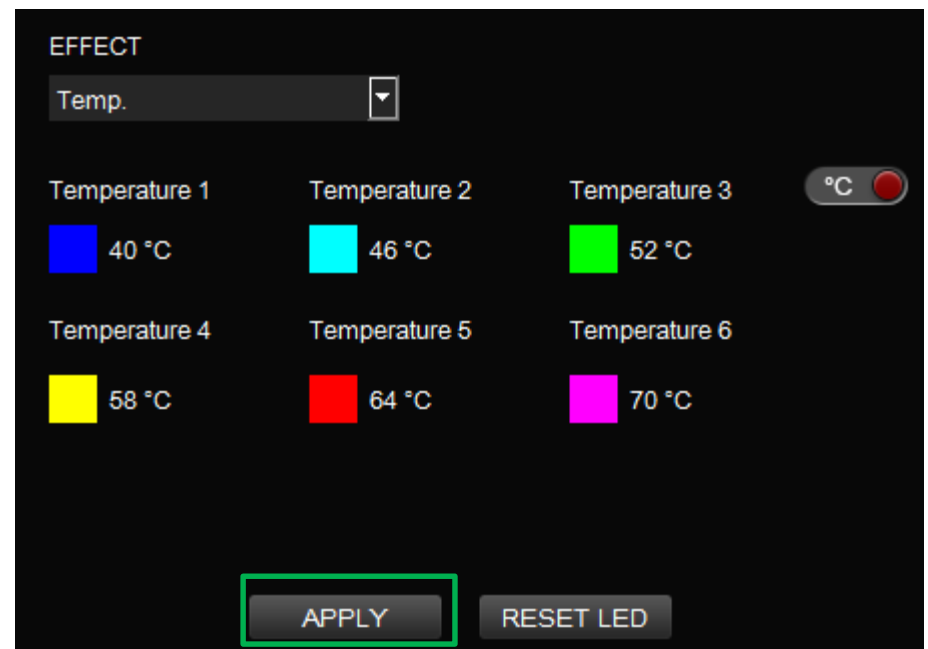
### Step 1:

Select "System Temperature" in the Lighting Effect drop-down list.



### Step 2:

Click Apply to save the new settings.



# | Chapter 5: Functions Available on the Settings Page

## Language Settings

Sets the language of the program's user interface.

## Official Website / Social Media

**Official Website:** Visit the Product official website.

**Social Media:** Visit Thermaltake on Facebook.

## Software Version / Firmware Version

**Software Version:** Displays the version number of the installed program.

**Firmware Version:** Displays the version number of the driver.

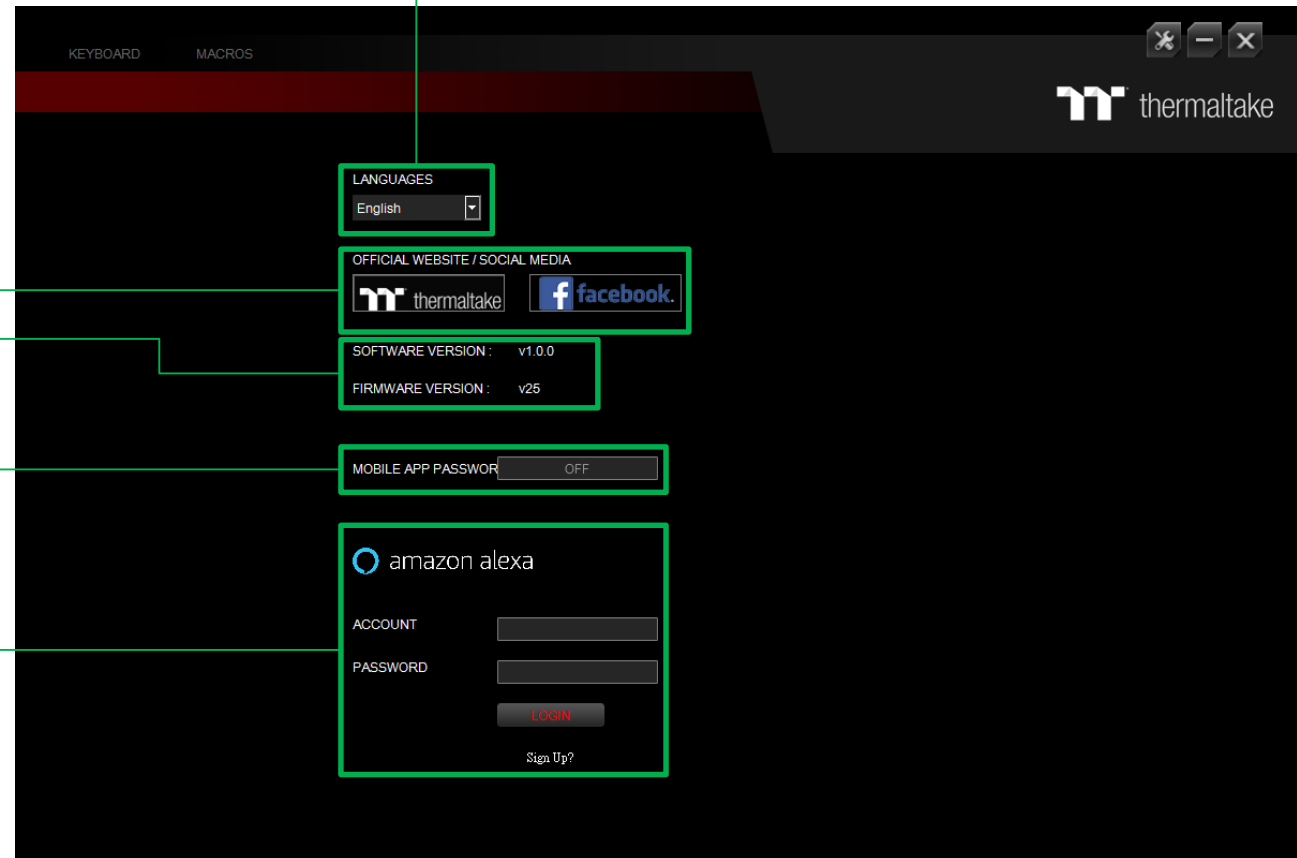
## TT iTAKE APP Password Setting

Enter four number or English alphabet.

✘ Empty is disable function.

## Amazon Alexa Login

TT iTAKE software support Amazon Alexa voice service, allowing you to control the lights by talking to the Alexa Enabled device.



**Thank You**