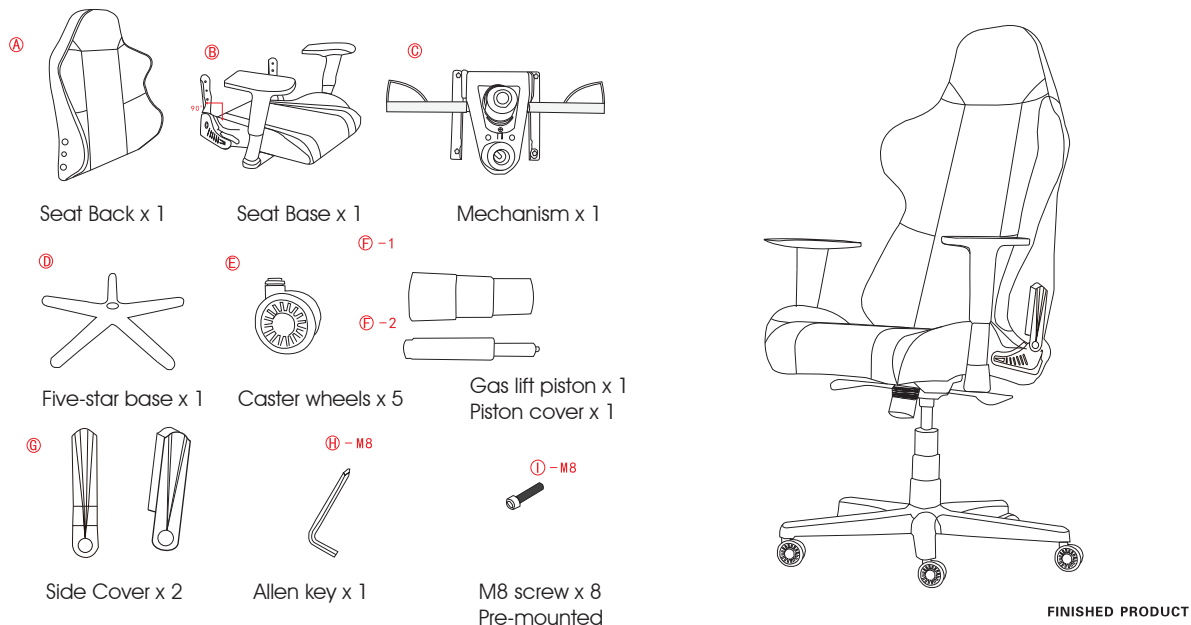


INSTALLATION GUIDE

ACCESSORIES

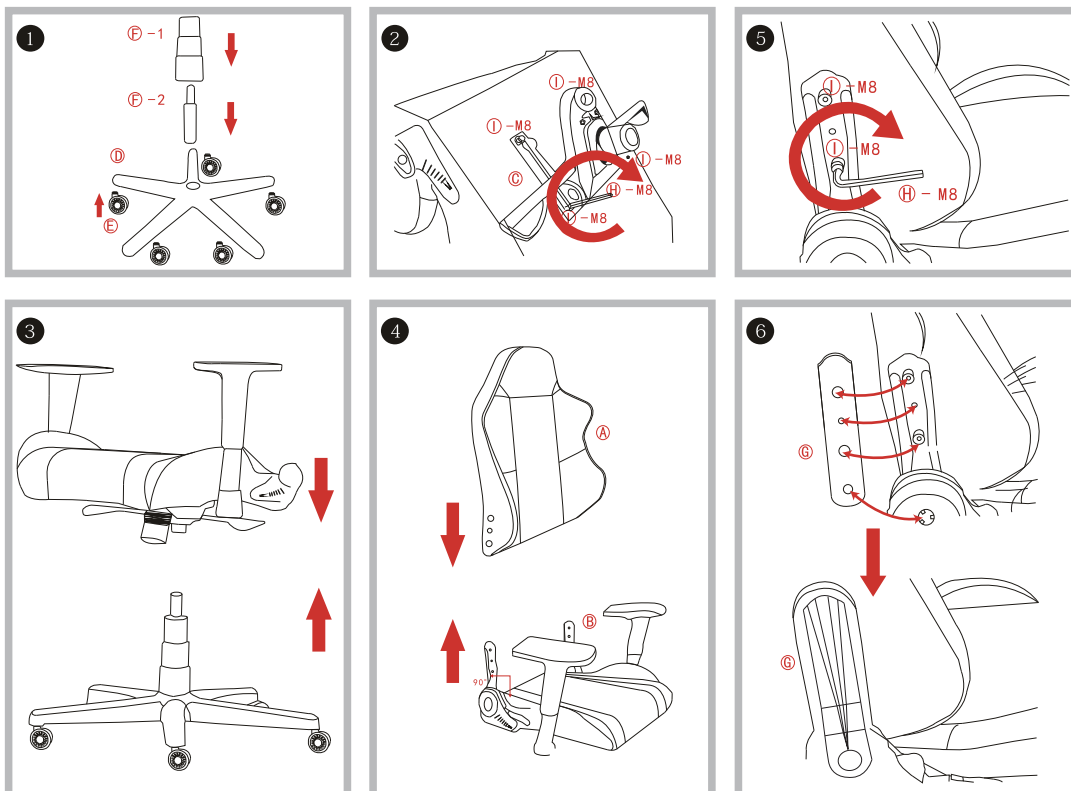


FINISHED PRODUCT

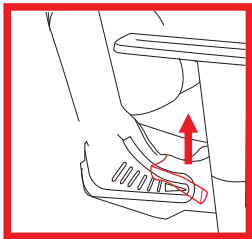
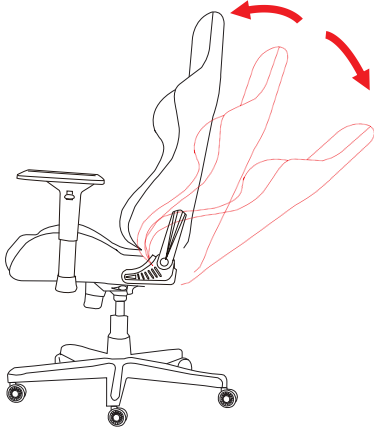
Attention Please make sure the angle of the adjuster on the seat base is set at 90 degrees (As shown in **B**)

STEP by STEP

1. Install the caster wheels, gas lift piston and piston covers onto the 5-star base. Please note: when installing the caster wheels, hold the wheels at a 90-degree with a firm grip of the hand; and do not use tools to knock it into place or the ground as to prevent damage.
2. Mount the Z-support mechanism underneath the seat base using 4x M8 screws. Please note: The screws for the mechanism have been tightened underneath the seat base and need to be removed and reattached via the provided allen key upon mechanism placement.
3. Attach the 5-star base with gas list piston onto the notch of the Z-support mechanism that has now been attached to the seat base.
4. Install the seat back onto the seat base.
5. Take out the 2x M8 screws from each side of the seat back with the allen key and align with seat base. Reinsert M8 screws and tighten with allen key. 6. Attaching mechanism to fix the side covers. Please note: to prevent accidental damage, do not bang it into place with force.

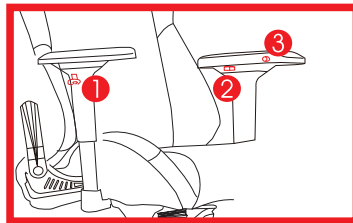
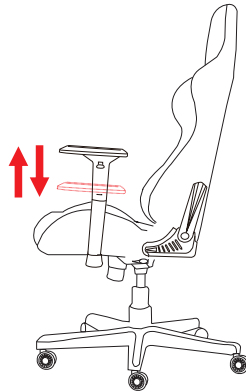


1. SEAT BACKREST ADJUSTMENT



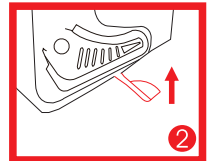
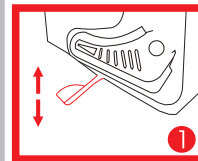
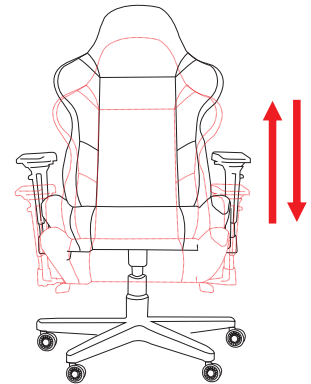
Backward of seat backrest: lift up the handle and adjust it to the most comfortable angle.
Retract the backrest: pull the handle upwards, lean against the seat back gently and it automatically goes back.

2. ADJUSTMENT OF ARMRESTS



Lift up the armrest: press button ① under it and then pull up the armrest.
Lower the armrest: press button ① under it and then lower down the armrest leftwards and rightwards.
Press button ② and pull the armrest leftwards and rightwards.
Press button ③ and pull the armrest frontwards and backwards.

3. SEAT HEIGHT ADJUSTMENT



Lower the seat: sit down on the seat and lift up the right handle, seat will lower down automatically. (refer to picture ②)

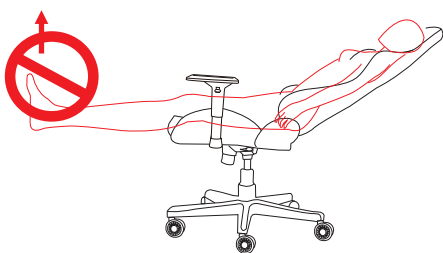
Lift the seat: stand up and pull up the right handle, it goes back automatically. (refer to picture ①)

Lock back posture: pull the left handle downwards. (refer to picture ①)

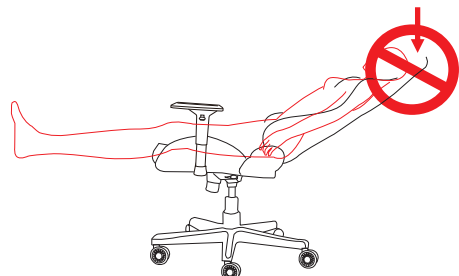
Unlock back posture: pull the left handle upwards. (refer to picture ②)

Attention

1. Max load : GT FIT/X FIT-120kg/264.55lb, GT COMFORT/ X COMFORT - 150kg/330.69lb
2. Do not use chair for other purposes other than originally intended by the manufacturer.
3. During installation, it is recommended that a soft covering is placed on the floor to prevent any accidental damage to it during the setup process.
4. Chair is designed for flat surface use.
5. Product is for single person use.
6. Do not place near flammables for risk of catching fire.
7. To prevent damage, keep away from direct sunlight.
8. Do not dismantle parts outside of original installation procedures.
9. Use a soft dry cloth for general cleaning and maintenance of the chair.
10. For harder to remove stains, use a soaked cloth with mild detergent and gently wipe the affected area. After that, wipe it again with a dry cloth.



For your safety, do not lift up your feet whilst lying flat on the chair.



For your safety, do not push your head back on the headrest area whilst lying flat on the chair.