



# THERON P<sub>+</sub> PLUS

GUI SOFTWARE GUIDE

# **A** CONTENTS

---

<b>PAGE</b>	<b>01</b>	<b>Main Interface</b>	
		● Main	----- 01
		● Profiles	----- 02
		● Normal Mode / Battle Mode	----- 03
		● Key Assignment	----- 04
<b>PAGE</b>	<b>09</b>	<b>Macro Setting</b>	
		● Macro Setting Interface	----- 09
		● Macro Manager	----- 10
		● Macro Record Setting	----- 11
		● Macro Record Timeline	----- 12
		● Insert Command	----- 14
<b>PAGE</b>	<b>15</b>	<b>Performance Setting</b>	
		● Performance Interface	----- 15
		● DPI	----- 16
		● Other Speed Performance	----- 17
		● Polling Rate	----- 18
		● Lift-off Control	----- 19
<b>PAGE</b>	<b>20</b>	<b>Light Setting</b>	
		● Light Option Interface	----- 20
<b>PAGE</b>	<b>21</b>	<b>Firmware Update</b>	
		● How to Update Firmware	----- 21

# | CONTENT ONE Main Interface



## Reset / Register / Guide / Close

**Reset** : Reset all setting

**Register** : Register as Tt eSPORTS's follower and receive updates from Tt eSPORTS via E-mail.

**Guide** : Configuration software manual

**Close** : Close Tt eSPORTS THERON Plus GUI Software

Page : 03

## Switch Normal/Battle Mode

The light frame indicates the Mode (Normal/Battle) you have selected



Page : 02

## Profile

THERON Plus has 5 profiles setting .

## Key Assignment / Macro Manager

Assign function to each button **Page : 04**  
**Macro Manager: Page : 09**

## Performance / Light

**Performance : Page : 15**  
Adjust THERON Plus's  
DPI / Polling Rate / Lift-off  
**Light Option : Page : 20**  
Change THERON Plus light

## Apply / Cancel / OK

**Apply:** Click Apply after completing profile setting and it will import setting into THERON Plus

**Cancel:** Click Cancel if you wish to cancel the setting

**OK:** Click OK after setting has been completed



## Tt eSPORTS GUI of Profile

Tt eSPORTS first version of Gaming User's Interface. We set GUI have Profiles can switch. Make Gamers convinced and customized to use a real design and make for gamer.



### Switch to Profile

Choose the Profile you wanted to change to.



## Light Effect into Game

Tt eSPORTS develop a fancy light effect. Just switch the mode and you can experience a different sensation in your place. When you are in Battle Mode, higher A.P.M (Action Per Minute) will have a higher frequency flashes, while in lower A.P.M, the flash frequency decreases. This make THERON Plus a gaming weapon that will enhance your gaming experience!

NORMAL

BATTLE

### Normal Mode

#### In Normal Mode

Scroll Wheel lights up.  
Tt Dragon light with Pulse-break lighting effect.  
Two lights can turn on or off independently.  
Bottom Panels will light up.

### Battle Mode

**In Battle Mode, colors will change accordingly to the frequency of current A.P.M**

**Low A.P.M BLUE – GREEN – YELLOW –RED –PURPLE High A.P.M**

Scroll Wheel with Pulse-break lighting effect.  
Tt Dragon light with Pulse-break lighting effect.  
Bottom Panels with Pulse-break lighting effect.

Once mode switched to Battle Mode, reminder as below will pop up:

#### WARNING

When the mode is switched to battle detection, the illumination effects will change according to the clicking frequency.

YES

## Customization for each of THERON Plus's button

Each THERON Plus's button can be customized as your preferred, even the Scroll Wheel's function can be changed!  
Customize it and make the THERON Plus your very own ultimate weapon to conquer!

**THERON Plus Can Do More than You Expect!**

### Buttons Configuration

Click on each button to change its function (See right picture)

Click each button to assign functions.

### Key Assignment

Choose the key to manage function



## 4 Key Functions to be Assigned!

Each of button can be assigned by four function ( Macro(T Key) / Single Key / Default / Launch Program ).



**Default :** All buttons function will be set as default setting. ( i.g : Left button as the Click action)

**Macro(T Key) :** Assign macro that has been recorded from Macro Manager.

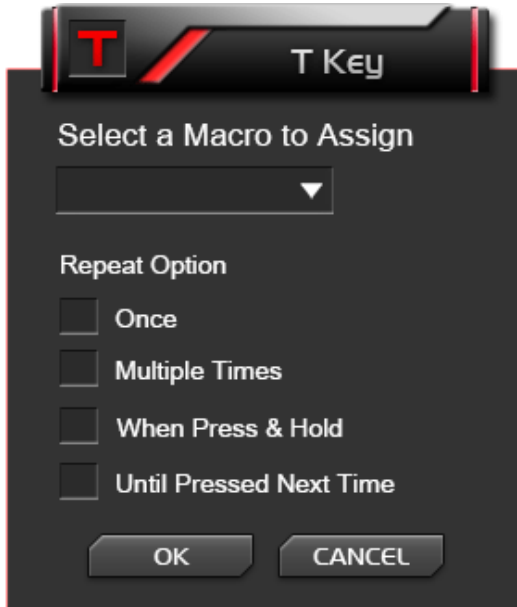
**Single Key :** Set be mouse click function signal.

**Launch Program :** Launch the pre-set program directly



## Macro (T Key)

T Key is the Macro key that you programmed.



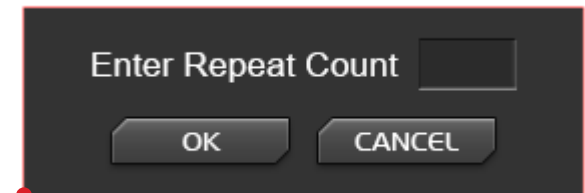
### Assign macro

Select a programmed macro that already recorded from Macro Manager ([Macro record detail, see Page 17](#))

### Repeat

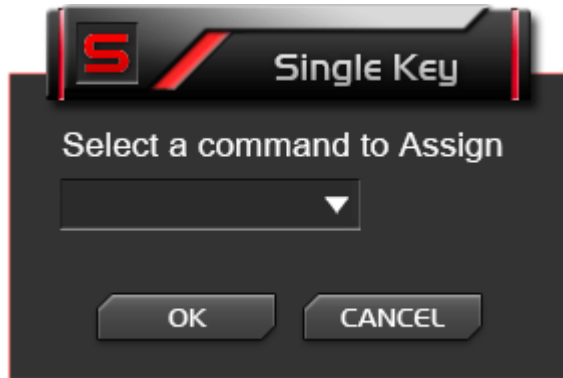
Customize the times that you want to have the macro repeats..

- Once :** Macro will repeat once.
- Multiple Times :** Macro will repeat depends on the repeat count set.
- When press & hold :** Macro will keep repeating while pressing and holding.
- Until press next time :** Macro will start repeating when you click and stop unless you click again



## Single Key

Assign a function to a key



## Commands

Commands that are available to be assigned



## Default

THERON Plus has its own pre-configured functions, which is the default. If you wanted to change back to the default setting, you can just choose Default and it will be changed back to the pre-configured functions.



## Launch Program

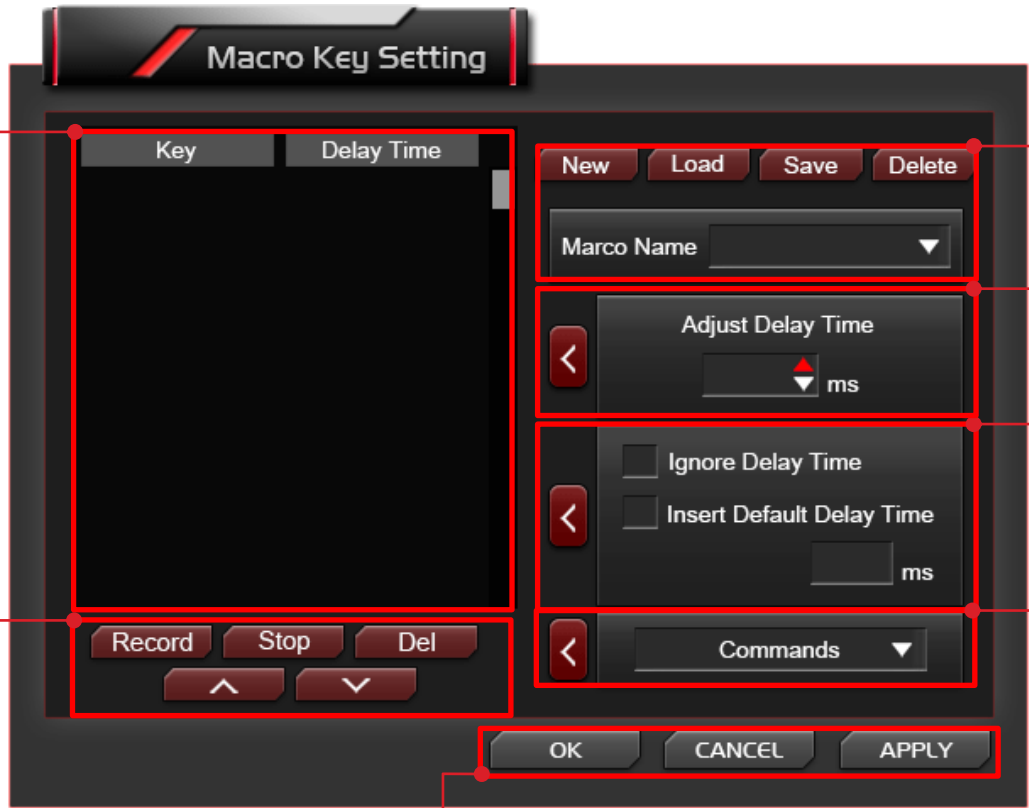
Pre-set a program and the program will showed up whenever you click on the button that has been programmed.



## Launch Program button

Click the Launch Program button and system will pop out file manager for you to choose the program that you want to launch.

# | CONTENT TWO Macro Setting



Page : 12

## Record Macro Timeline

To check the macro programmed.

Page : 10

## Macro Manager

Create / Load / Save / Delete Macro and Modifying Macro Name.

Page : 11

## Adjust Delay Time

Customize the delay time

Page : 11

## Macro Record Setting

2 selections for delay time

Page : 12

## Macro Modification

Modified recorded macro

Page : 14

## Commands

Set commands to macro

## Apply / Cancel / OK

**APPLY:** Click Apply when Macro Setting completed

**CANCEL:** Click Cancel to cancel the setting

**OK:** Click OK after Macro Setting has been fully completed

## Macro Manager

Macro manager allows you to create, delete, save and load a macro.



### Manage Macro

#### **NEW / DELETE / SAVE / LOAD macro**

NEW - Create a new Macro

DELETE - Delete existing Macro

SAVE - Save a Macro .

LOAD - Load a Macro that had been saved.

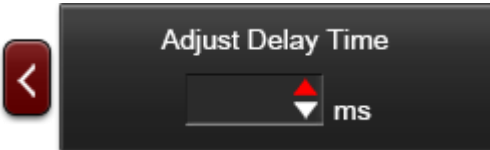
#### **Macro Name**

Select a Macro.



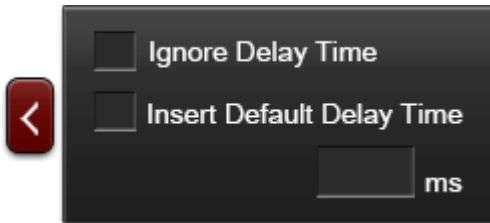
## Macro Record Setting

3 selections provided for you to choose for setting the Delay Time.



### Adjust Delay Time

You can adjust Delay Time that already record



### Macro Delay Time Setting

**Ignore Delay Time**

: No delay time between key signal.

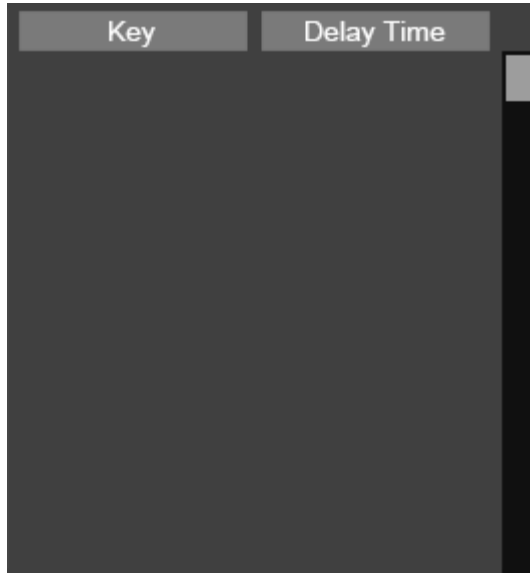
**Insert Default Delay Time** \_\_\_ ms

: Delay time depend on the preferred time set.



## Macro Record Timeline

Allow you to program your macro as preferred.



**Record program** : Click Record to start recording via your keyboard or mouse and all signal will be recorded on this timeline.



**Delete signal** : Choose the recorded signal that you wish to delete (Once signal has been chosen, the background will turn RED as below picture)



Click Delete and the selected signal will be removed.



**Stop program** : Click Stop whenever recording has been completed.





## Macro Record Timeline

Once Macro Name and Recording have been completed, you can proceed to programming your macro now.



### Switch signal up or down

Select the signal and click Up/ Down to rearrange the recorded signals

**Note : Please be careful while arranging the “Press” & “Release” signal**

Key	Delay Time
'1'	2ms
'1'	0ms
'2'	4ms
'2'	0ms
'3'	0ms
'3'	0ms

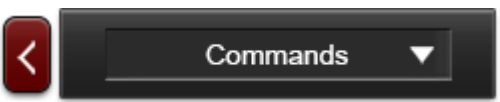
Choose “3” and press “UP” or “DOWN” to arrange →

Key	Delay Time
'1'	2ms
'1'	0ms
'3'	0ms
'3'	0ms
'2'	4ms
'2'	0ms

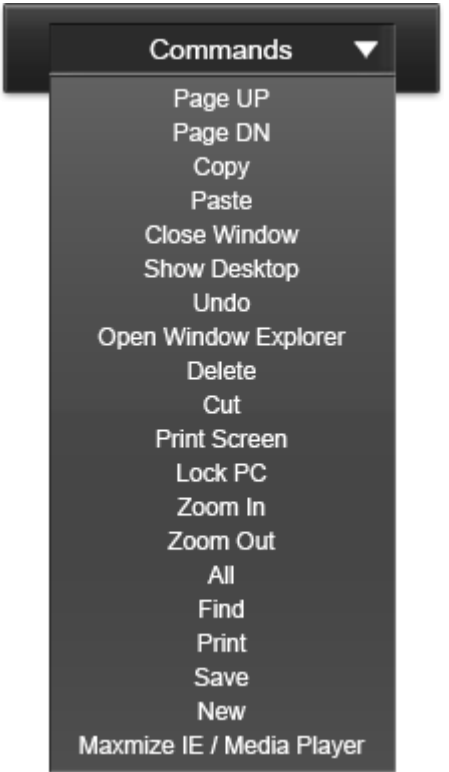
## Insert Command

If you want to modify or insert Command to the programmed macro, please click the Command button and select a command into macro from the drop down selection.

### Insert Command



Select a command as below picture



# | CONTENT THREE Performance Setting



Page : 16

**DPI**  
DPI setting

Page : 17

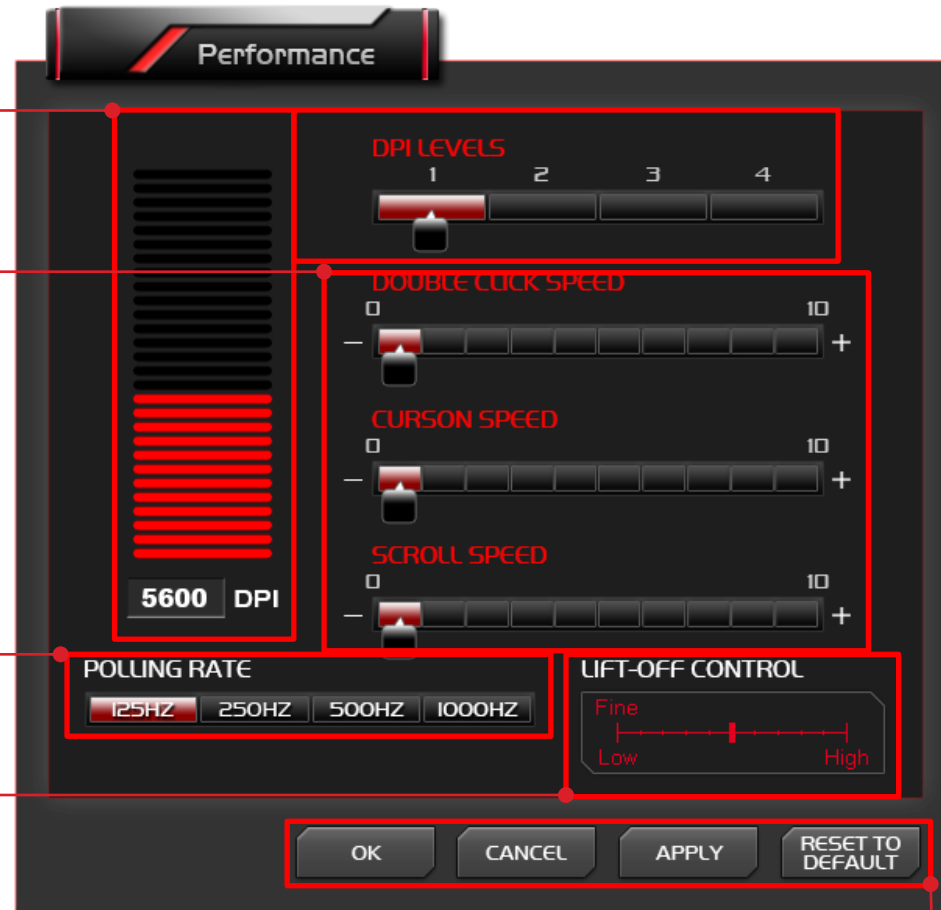
**Mouse speed adjust of Scroll / Double Click / Cursor**

Page : 18

**Polling Rate**  
Adjust Polling Rate

Page : 19

**Lift-Off Control**  
Adjust the sensor distance



**Apply / Cancel / OK**

- APPLY:** Click Apply you completed the setting
- CANCEL:** Click Cancel to cancel the setting
- OK:** Click OK after DPI Setting has been fully completed

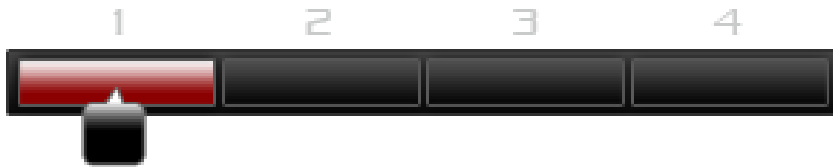


## Dot Per Inch – The Mouse DPI

Do you know what DPI means?

DPI stands for Dot Per Inch, is a measurement of how sensitive a mouse is. The higher a mouse's DPI, the farther the cursor on your screen will move when you move the mouse. A mouse with a higher DPI setting detects and reacts to smaller movements.

### DPI LEVELS



## DPI levels for each Profile

You can choose your preferred DPI level (Each profile can have up to 4 DPI levels).



5600

### Configure a DPI

Choose the DPI level by adjusting the RED bar to your preferred DPI level or fill in the DPI number at the [5600] box.



## Mouse speed adjust of Scroll / Double Click / Cursor

The other Mouse function speed can be adjusted.

### DOUBLE CLICK SPEED



### CURSON SPEED



### SCROLL SPEED



**Double Click Speed** : To adjust the speed of double click to detonate signal.

**Cursor Speed** : To increase or decrease the mouse's moving speed.

**Scroll Speed** : To adjust the scrolling speed.

## Polling Rate

A higher polling rate could decrease the lag that occurs between when you move your mouse and when the movement shows up on your screen. Higher Polling Rate does not mean that you can move fast, that will depend on what DPI level.



### Adjust your THERON Plus Polling Rate

There are 4 levels for Polling Rate to choose from:

125 Hz polling rate, it's reporting THERON Plus's position to the computer 125 times every second (Also known as 8ms)

250 Hz polling rate, it's reporting THERON Plus's position to the computer 250 times every second (Also known as 4ms)

500 Hz polling rate, it's reporting THERON Plus's position to the computer 500 times every second (Also known as 2ms)

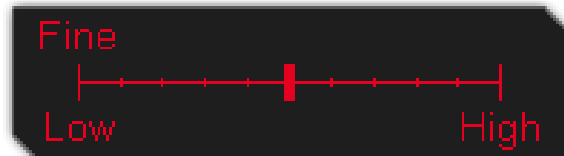
1000 Hz polling rate, it's reporting THERON Plus's position to the computer 1000 times every second (Also known as 1ms)



## Lift-Off Control

Lift-off trace sometimes required for particular games and some mouse-pads that will influence the trace distance and affected gameplay. Now with THERON Plus, this allow gamers to adjust the distance to the best distance they want while gaming!

### LIFT-OFF CONTROL



### Adjust your THERON Plus Lift-Off

Adjust the sensitivity by adjusting the level.

**CAUTION** : Lowest is not recommended as THERON Plus might not be able to sense the mouse pad.



# | CONTENT FOUR Light Setting



## Click and Choose THERON Plus Light Part

THERON Plus have four part can select and customize light color.  
Scroll / Left and Right bottom panel / Down bottom panel / Tt  
DRAGON LOGO

**Note:** Tt DRAGON LOGO will have a pulse-break light effect.

## Select a Light color

You can select a color on left picture spectrum.

## OK / CANCEL/ APPLY

**OK:** Click OK to save the setting

**CANCEL:** Click CANCEL to cancel the setting

**APPLY:** Click APPLY to save the setting

# | CONTENT FIVE Firmware Update



## Update Your THERON Plus Firmware

Please follow our official Website on : [www.ttesports.com](http://www.ttesports.com)

Go to the Product web page, scroll down to the “Download” section for firmware updates information.